

Owner's Manual

Parts Manual

READ THIS MANUAL CAREFULLY
IT CONTAINS IMPORTANT SAFETY INFORMATION

miniSHARK



Recommended Age: 8 years old
FOR OFF-ROAD USE ONLY

HAMMERHEAD OFF-ROAD, INC. – EMISSION CONTROL SYSTEM WARRANTY

YOUR WARRANTY RIGHTS AND OBLIGATIONS

The emission control system warranty period for this vehicle begins on the date the vehicle is delivered to the first purchaser other than an authorized dealer, or the date it is first used as a demonstrator, lease, or company vehicle, whichever comes first and continues for 30 months after that date, or 5,000km, whichever comes first, provided there has been no abuse, neglect or improper maintenance of your vehicle. Where a warrantable condition exists, the Distributor will repair your vehicle at no cost to you, including diagnosis, parts and labor. If an emission-related part on your vehicle is defective, the part will be repaired or replaced by the Distributor. This is your emission control defects warranty.

OWNER'S WARRANTY RESPONSIBILITIES

As the vehicle owner, you are responsible for the performance of the required maintenance. You should maintain a record of all maintenance performed on your vehicle and retain all receipts covering maintenance on your vehicle. You may not be denied a warranty claim solely because of your failure to ensure the performance of all scheduled maintenance or lack of maintenance records or receipts. You are responsible for presenting your vehicle to an authorized dealer as soon as a problem exists. The warranty repairs should be completed in a reasonable amount of time, not to exceed 30 days.

As the vehicle owner, you should be aware that you may be denied your warranty coverage if your vehicle or a part has failed due to abuse, neglect, improper maintenance, or unapproved modifications.

WARRANTY COVERAGE

The Distributor warrants that each new 2009 and later vehicle:

- is designed, built, and equipped so as to conform at the time of initial retail purchase with all applicable regulations of the United States Environmental Protection Agency, and the California Air Resources Board; and
- is free from defects in material and workmanship which cause such vehicle to fail to conform with applicable regulations of the United States Environmental Protection Agency or the California Air Resources Board for the periods specified above.

Your emission control system warranty covers components whose failure would increase an engine's emission, including electronic controls, fuel injection system, carburetor, the ignition system, catalytic converter, or any other system utilized in this vehicle to control emission if it is originally equipped. Also included may be hoses, connectors and other emission-related assemblies. Replacing or repairing other components (including parts, labor, and other costs) not covered by this emission control system warranty or the standard warranty is the responsibility of the owner.

Coverage of repairs under this warranty applies only when repairs are completed at an authorized dealer or repair facility. The Distributor will not cover repairs performed outside of an authorized dealer or repair facility, except in an emergency situation. The use of replacement parts not equivalent to the original parts may impair the effectiveness of your vehicle's emission control system. If such a replacement part is used and an authorized dealer determines it is defective or causes a failure of a warranted part, your claim for repair to bring your vehicle into compliance with applicable standards may be denied.

If an emergency situation exists when a warranted part or a dealer is not reasonably available to the owner, repairs may be performed at any available service establishment, or by the owner, using any replacement part. The Distributor shall reimburse the owner for the expenses, including diagnostic charges, not to exceed the Distributor's suggested retail price for all warranted parts replaced and labor charges based on the Distributor's recommend time allowance for the warranty repair and the geographically appropriate hourly labor rate. The owner may reasonably be required to keep receipts and failed parts in order to receive compensation.

This Emission Control System Warranty is in addition to the standard Limited Warranty.

EXCLUSIONS AND LIMITATIONS

This warranty does not cover the following:

- Failures or malfunctions of the emission control systems caused by abuse, alteration, accident, misuse, the use of leaded gasoline.
- Replacement of expendable maintenance items unless they are original equipment defective in material or workmanship under normal use, and the first required replacement interval for the item has not been reached. Expendable maintenance items include but not limited to spark plugs, filters, coolant, lubricants, gaskets, hoses, and belts.
- Replacements of parts and other services and adjustments for required maintenance.
- Any vehicle equipped with an odometer or hour meter where the reading is altered so that actual mileage cannot be readily determined.
- Repairs or replacements as a result of:
 - Accident
 - Misuse
 - Use of replacement parts or accessories not conforming to the original specifications which adversely affect performance
- Physical damage, corrosion, or defects caused by fire, explosions or similar causes beyond the control of the Distributor.
- Failures not caused by a defect in material or workmanship.

Use of the vehicle in any type of competitive racing or related events immediately and completely voids this and all other warranties.

LIMITED LIABILITY

The liability of the Distributor under this Emission Control System Warranty is limited solely to the remedying of defects in material workmanship by an authorized dealer at its place of business during customary business hours. This warranty does not cover inconvenience or loss of use of the vehicle or transportation of the vehicle to/from the authorized dealer. The Distributor is not liable to any person for incidental, consequential or special damages of any description, whether arising out of express or implied warranty or any other contract, negligence or other tort or otherwise.

No express emission control system warranty is given by the Distributor except as specifically set forth herein. Any emission control system warranty implied by law, including any warranty of merchantability or fitness for a particular purpose is limited to the express emission control system warranty terms stated in this warranty. The foregoing statements of warranty are exclusive and in lieu of all other remedies. All express warranties not stated in this warranty are disclaimed. Some states do not allow limitations on how long an implied warranty lasts, so the above limitations may not apply if it is inconsistent with the controlling state law.

No dealer is authorized to modify this Emission Control System Warranty. If you have any questions regarding your warranty rights and responsibilities, you should contact Hammerhead Off-Road, Inc. at (214) 513-1700 (or you can write to 1200 Lakeside Parkway #325, Flower Mound, TX 75028) or the California Air Resources Board, 9528 Telstar Avenue, El Monte, CA 91731 (for California registered vehicles only).

MINI Shark-kart Limited Warranty

This warranty policy only applies to those cases where the new vehicle is unloaded from its shipping containers, set up and delivered by and authorized dealer, and that under normal use and service is found to have defects in parts or workmanship under the following terms and conditions .This warranty covers the MINI Shark-kart and engine related components for a period of 90 days.

This warranty does not apply to any parts, which in opinion of seller was defective because of improper maintenance, improper assembly, alterations, abuse, negligence or accident.

Should warranty service be required on your MINI Shark-kart during the 90 days warranty period, please contact your nearest authorized dealer for repairs.

The Emission Control warranty from the previous page supersedes this warranty in regards of Emission Control Components.

What is not covered under this warranty

Misuse, negligence, alterations, accidents or any abnormal use including non genuine parts, renting or leasing, competition or racing. This warranty does not cover loss of use of the unit or loss of time, or inconvenience or normal wear and deterioration caused by the use or storage of consumable items such as spark plugs, chain, brake shoes, fuses, clutch plates, sprockets, light bulbs, battery and tires.

OWNER'S MANUAL

1.FOREWORD 1

2.SAFETY 2

3.READY TO DRLVE 7

4.IS YOUR VEHILE READY TO DRIVE? 9

5.SPECIFICATIONS 10

6.OPERATION 12

7.ADJUSTING THE THROTTLE AND BRAKE CABLES 14

8.REPAIR 15

9.PERIODICAL CHECK AND SERVICES 16

10.WIRING DIAGRAM 17

PARTS MANUAL

1.FIG 168 GASOLING ENGINE 19

2.FRAME GROUP 27

3.STEERING SHAFT ASSY 29

4.SUSPENSION ARM ASSY 31

5.REAR SWING ARM 33

6.REAR HOUSING 35

7.WIRE HARNESS/ELECTRICAL/SEAT 37

8.WARNING STICKERS 39

Thank you for purchasing our MINI Shark-kart .We hope you will enjoy it. before you start to operate the MINI Shark-kart , please read through this Owner's Manual carefully as it contains important safety and maintenance information. Failure to follow the warnings contained in this manual can result in serious injuries .

Be sure to follow the recommended maintenance schedule and service your MINI Shark-kart accordingly. Preventive maintenance is extremely important to the longevity of your MINI Shark-kart.

Beginners should seek instruction from your dealer or qualified instructors before and during initial use of the MINI Shark-kart. It is also recommended to practice in a large open area to familiarize yourself with operations of this MINI Shark-kart.

We hope you will have a pleasant experience with our products and thank you again for choosing our MINI Shark-kart.

SAFETY

2.1 Notes to Parents

We know that you, as parent, will have your youngster's safety foremost in mind. Serious injury can result from the improper use of MINI Shark-kart. Your youngster's safety will depend on you taking a "safety first" approach to MINI Shark-kart driving at all times. It's important to carefully read and follow the instructions and warnings contained in this manual and on the labels posted on the MINI Shark-kart.

Once your youngster is ready to learn to drive, you must first be familiar with this MINI Shark-kart. You will be serving as teacher, coach, and safety supervisor for your youngster. You must know the controls, handling characteristics, maintenance requirements, and proper driving technique. Read and understand this manual, and labels attached with this vehicle. Make sure that the MINI Shark-kart to be driven is one that is recommended for use by your youngster's age group. You should supervise your youngster's operation of this MINI Shark-kart at all times and should permit continual use only if you determine your youngster's ability and judgement to operate this MINI Shark-kart properly.

Teaching your youngster MINI Shark-kart safety is a step-by-step process. It begins with safety rules and moves to actual driving procedures. Since youngsters learn at different rates, it's up to you to set the pace of your youngster's progress. At some point you may decide that he or she is not ready to drive the MINI Shark-kart.

Always closely supervise your youngster's driving. This is true even if your youngster has learned and mastered the rules and skills of safe MINI Shark-kart driving. Youngsters get tired and become careless easily. They do not always see everything that is important around them. Your close supervision and good judgement is a must.

Show your youngster how to use each control as you describe its action. Refer to this manual to learn control location and function before instructing your youngster. Test yourself by operating the controls. Have your youngster dress in proper protective gear and sit in the machine as you point out each control. It is important to have your youngster wear protective gear whenever sitting in this MINI Shark-kart.

2.2 SAFETY INTRODUCTION


In order to keep everyone safe, you must take responsibility for the safe operation of your MINI Shark-kart.

To help you make informed decisions about safety, we have provided operating procedures and other information on labels and in this manual. These information alerts you to potential hazards that could hurt you or others.

It is not practical or possible to warn you about all hazards associated with operating or maintaining a MINI Shark-kart. You must use your own good judgment.

You will find important safety information in a variety of forms, including:

Safety labels - On the MINI Shark-kart.

Safety Messages - Preceded by a safety alert symbol  and one of two signal words: **WARNING** or **CAUTION**.

These signal words mean:

Physical harm may result from failure to adhere to the instructions that are described within the WARNING labels.



Safety Headings such as Important Safety Reminders or Important Safety Precautions.

Safety Section-such as safety.

Instructions-how to use this MINI Shark-kart correctly and safely

This entire manual is filled with important safety information-please read it all carefully.

2.3 PROTECTIVE GEAR

To Parents: MINI Shark-kart driving demands that your youngster wear proper protective gear. MINI Shark-kart drivers should always wear a helmet, eye protection, gloves, long pants, a long-sleeved shirt or jacket, and over-the-ankle boots. Anything less is not adequate protection. Never let anyone drive a MINI Shark-kart without an approved motorcycle helmet. Be sure it fits correctly. It should be snug but not tight. It must be properly fastened. Have you youngster wear safety gear whenever getting in a MINI Shark-kart. This action will stress the importance of safety gear and help to develop safe driving habits.

2.4 SAFETY INTRODUCTION

There is much that you can do to protect yourself while operating your MINI Shark-kart .You will find many helpful recommendations throughout this manual. The following are a few that we consider to be the most important.

Follow the Age Recommendation

The MINI Shark-kart should not be driven by anyone under the age of 8.

Always Wear a Helmet

It's a proven fact: helmets significantly reduce the number and severity of head injuries. Always wear an approved motorcycle helmet. We also recommend that you wear eye protection, sturdy boots, gloves, and other protective gear.

Drive Off-Road Only

Your MINI Shark-kart is designed and manufactured for off-road use only. The tires are not made for use on pavements, and the MINI Shark-kart does not have turn signals and other features required for use on public roads. If you need to cross a paved or public road, get off and walk your MINI Shark-kart across.

Do not operate this MINI Shark-kart at night

Dark vision can greatly reduce driver's visibility and judgment. So driving at night is dangerous and can increase the possibility for an accident.

Never run your MINI Shark-kart indoors

The exhaust from the engine contains a tasteless, odorless and poisonous gas called carbon monoxide.

SAFETY

Keep away from moving parts of the MINI Shark-kart

The operator of the MINI Shark-kart should never place their hands or other parts of their body near moving part of the MINI Shark-kart. Failure to adhere to this warning will cause physical harm to your body.

Skidding or sliding

The terrain surface can be a major factor affecting turns. Skidding in a turn is more likely to occur on slippery surfaces such as snow, ice, mud and loose gravel. If you skid on ice, you may lose all directional control. To avoid skidding on slippery terrain, keep you speed low and drive carefully

Hold on to the wheel

Driving without holding on to the steering wheel is very dangerous.

Always drive it at a safe speed, depending on the situation.

Driving down a slope too fast may result in the MINI Shark-kart overturning

A wet road prolongs the stopping distance of your vehicle. Therefore always take care that you only drive at a speed at which you are able to stop in time.

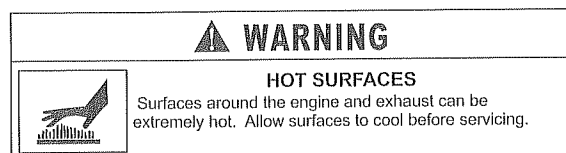
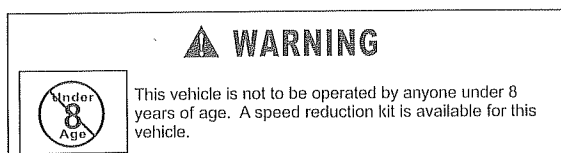
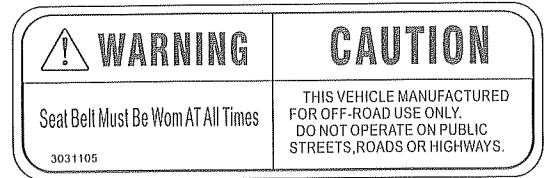
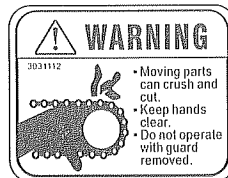
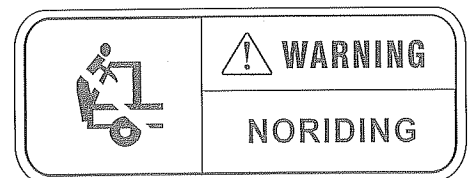
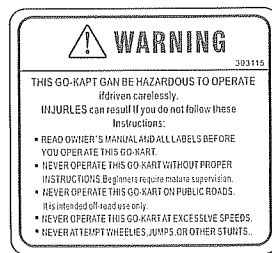
Going downhill requires a longer brake path.

Taking sharp turns at a high speed also may cause the MINI Shark-kart to overturn

2.5 SAFETY LABELS

This section presents some of the most important information and recommendations to help you drive your MINI Shark-kart safely. Please take a few moments to read these pages.

The labels should be considered permanent parts of the MINI Shark-kart. If a label comes off or becomes hard to read, contact your dealer for a replacement.



2.6 SAFE DRIVING PRECAUTION

Off Road Use Only

The MINI Shark-kart and its tires are designed and manufactured for off-road use only, not for pavement. Driving on pavement can affect handling and control. Your youngster should not drive the MINI Shark-kart on pavement.

 **WARNING**

Operating this MINI Fun-kart on paved surfaces may seriously affect handling and control of the MINI Fun-kart, and may cause the vehicle to go out of control. Never operate the MINI Fun-Kart on any paved surfaces, including sidewalks, driveways, parking lots and streets.

When driving off-road, also remember to always obey local off-road driving laws and regulations. Obtain permission to drive on private property. Avoid posted areas and obey “no trespassing” signs.

Keep Hands and Feet on Controls

When driving your MINI Shark-kart, always keep both hands on the steering wheel and both feet on the foot controls. It is important to maintain your balance and to control the MINI Shark-kart. Removing hands or feet away from the controls can reduce your ability to react and control the MINI Shark-kart.

 **WARNING**

Removing hands from the steering wheel or feet from the foot controls during operation can reduce your ability to control the MINI Shark-kart or could cause you to lose your balance and fall off the MINI Shark-kart. Always keep both hands on the steering wheel and both feet on the foot controls of your MINI Shark-kart during operation.

Hot components

Show your youngster the engine, exhaust pipe, and muffler tell him or her not to touch these parts because they are hot while the engine is running. Explain that they will remain hot after the engine is stopped. Also explain that hands and feet must be kept away from moving parts of MINI Shark-kart

Inspection

Your youngster's safety depends in part on the condition of the MINI Shark-kart. Be sure to inspect it before each use. Starting and refueling of the vehicle should be done by responsible adults only. Follow a regular maintenance program.

Adult supervision

Even after young drivers have learned the basic driving skills, direct supervision by an experienced adult is necessary at all times. Make sure that all MINI Shark-kart users under your supervision get proper driving instructions. Follow safety precautions strictly to provide a “safty first” approach to MINI Shark-kart driving. Teaching your youngster how to drive MINI Shark-kart

SAFETY

safety will increase the enjoyment of MINI Shark-kart driving.

Control Speed

Driving at excessive speed increases the chances of an accident .In choosing an appropriate speed, you need to consider the capability of your MINI Shark-kart, the terrain, visibility and other operating conditions, plus your own skill and experience



WARNING

Operating this MINI Shark-kart at excessive speeds increases your chances of losing control of the MINI Shark-kart, which can result in an accident.

Always drive at a speed that is appropriate for your MINI Shark-kart, the terrain, visibility and other operating conditions, and your experience.

Use MINI SHARK-KART on Unfamiliar or Rough Terrain

Before letting your youngster drive in a new area, always check the terrain thoroughly. Don't leave them drive fast on unfamiliar terrain or when visibility is limited (watch out for obstructions like hidden rocks, bumps, or holes).



WARNING

Failure to use extra care when operating this MINI Shark-kart on unfamiliar terrain could result in the MINI Shark-kart overturning or going out of control.

Go slowly and be extra careful when operating on unfamiliar terrain. Always be alert to changing terrain conditions when operating the MINI Shark-kart.

Never let your youngster drive past the limit of visibility. Maintain a safe distance between their MINI Shark-kart and other off-road vehicles. Always exercise caution and use extra care on rough, slippery and loose terrain.



WARNING

Failure to use extra care when operating on excessively rough, slippery or loose terrain could cause loss of traction or vehicle control, which could result in an accident, including an overturn.

Do not operate on excessively rough, slippery or loose terrain until you have learned and practiced the skills necessary to control the MINI Shark-kart on such terrain. Always be especially cautious on these kinds of terrain.

Do not Perform Stunts

Your youngster should always operate their MINI Shark-kart in a safe and reasonable manner. When driving, they should always keep all four wheels on the Ground.



WARNING

Attempting wheelies, jumps, and other stunts increases the chance of an accident, including an overturn.

Never attempt stunts, such as wheelies or jumps. Don't try to show off.

READY TO DRIVE?

Before the MINI Shark-kart is driven for the first time, we urge you to:

Read this owner's manual and the labels on your MINI Shark-kart carefully.

Make sure you understand all the safety messages.

Know how to operate all the controls and that your youngster has been taught and understands how to operate all the controls.

Before each drive, be sure your youngster:

feel well and is in good physical and mental condition.

is wearing an approved motorcycle helmet (with chin strap tightened securely), eye protection, and other protective clothing.

don't have any alcohol or drugs in your system.

Wear their seat belt at all the times while driving the MINI Shark-kart

WARNING

Operating this kart without wearing an approved motorcycle helmet, eye protection, and protective clothing could increase your chances of head and/or eye injury, and the possibility of death in the event of a severe accident.

Always wear an approved motorcycle helmet that fits properly and wear eye protection (goggles or face shield), gloves, boots, long-sleeved shirt or jacket and pants.

To parents: additional signs of physical readiness can be observed in your youngster's other play activities. In general, a youngster should be well-coordinated and have good balance. This coordination can be demonstrated by the abilities such as using a skipping, jumping rope, skates, a skateboard, riding a bicycle, etc. if a youngster cannot perform well in these types of activities, more physical development is required.

WARNING

Operating this MINI Shark-kart with no seat belt could cause you to be thrown from the vehicle

To parents: one indicator that youngsters are ready to drive a MINI Shark-kart is when they show a safety-conscious attitude and are aware of the dangers of MINI Shark-kart operation.

If the youngster has a habit of rashness or is involved in accidents often while using a bicycle or skateboard, the youngster is not ready to drive this MINI Shark-kart.

A: following questions can help PARENTS further pinpoint whether youngster is ready to drive:

1. can youngster place his or her feet firmly, easily on the foot pedal?

READY TO DRIVE?

2、 Can youngster's hands reach the steering wheel comfortably? Can your youngster operate the steering wheel?

3、 Can your youngster push the foot pedal brake downward with enough strength?

4、 Does your youngster understand the controls of the MINI Shark-kart?

PREDRIVE INSPECTION(TO Parents)

Before you continue:

1、 Have you determined your youngster's readiness to drive this MINI Shark-kart? Do not let your youngster drive if you have any doubt.

2、 Have you read this manual and reviewed it with your youngster?

3、 Have you inspected the vehicle and maintained it according to this manual?

4、 Is your youngster wearing the proper protective gear?

5、 Has your youngster learned to locate the MINI Shark-kart controls without help? Does he or she know how to operate them smoothly?

6、 Does your youngster understand he or she must always drive off-road?

7、 Have you stressed to your youngster the importance of keeping his or her feet on the foot pedals and their hands on the steering wheel.

B. Practicing area(to parents)

The best place for learning is a level area 100'x200' that is free from obstacles such as rocks, stumps, or holes. The learning area may have a loose or hard dirt surface. A grassy surface is also acceptable. It should not have two different surfaces. Be sure there is enough room to maneuver, and that no other drivers are close by.

C. Getting used to the vehicle in motion(to parents)

Getting the feel on foot pedal brake: be sure your youngster is wearing all of the proper protective gear. With the engine still OFF, have your youngster go inside MINI Shark-kart. If you physically can, push the vehicle slowly. Have your youngster brake to feel how much pressure is needed for a smooth stop. Practice this several times until you are sure this skill is developed. Remind your youngster to keep his or her head up and look forward and to keep both feet on foot pedals.

Getting the feel on the foot pedal throttle control: with the engine off, have your youngster practice smoothly moving the foot pedal throttle control. Your youngster will learn how much pressure it takes to start moving in a later exercise.

Explain that pushing the throttle will increase speed. Releasing the throttle and applying the brake will slow kart down. Ask your youngster to tell you how throttle control and applying the braking affect kart's speed.

Getting the feel on turning: first with MINI Shark-kart stopped and engine OFF, look in the direction of the turn, turn steering wheel in the direction of the turn, repeat this exercise while you are slowly pushing your youngster on MINI Shark-kart. Make sure he or she can turn the vehicle in both directions using this technique.

The MINI Shark-kart may continue to roll for some distance. Watch the distance must be included in the stopping space of MINI Shark-kart and that this distance may increase with speed.

IS YOUR VEHICLE READY TO DRIVE?

Pre-drive Inspection

Check the following items before you get on the MINI Shark-kart:

Engine oil

Check the level and add oil if needed. Check for leaks

Fuel

Check the level and fuel if needed. Also make sure the fuel fill cap is securely fastened check for leaks

Tires

Use a gauge to check the air pressure. Adjust if needed. Also look for signs of damages or excessive wear.

Nuts & Bolts

Check the wheel to see that the axle nuts tight. Use a wrench to make sure all accessible nuts, bolts, and fasteners are tight.

Seat belt

Make sure seat belt is fastened and locking latch is working.

SPECIFICATIONS

DIMENSIONS

OverallLength	1485mm
OverallWidth	914mm
OverallHeight	1092mm
Wheelbase	1060mm
FrontTrack	812mm
RearTrack	711mm
GroundClearance	90mm

ENGINE

Type	Single , Forced air-cooled. 4-Stroke
Bore/Stroke	68mmX45mm
CorrectedCompressionratio	8.5:1
Carburetor	RX
OutputPower	5.5H.P/3600rpm
MaximumTorque	8.0ft-lbs/5500rpm
Starting	pull start backup
Ignition	C.D.I
Lubrication	Force & Splash
Transmission	Automatic
Sparkplug	BPR6ES(NGK)
FuelType	RQ90(unleaded)
Lubricate oil	SG15W-40

CAPACITIES

Maximum load	Double Seats/ 166 Lbs
Fuel tank	0.6L
Engine oil	3Oz
Starting	< 5s

SPECIFICATIONS

Brake Track..... < 7m@10miles/h
Top speed10miles/h(or limited as customers require)

CHASSIS

Rear brake disc
Front tire 25*8-12
Rear tire..... 25*10-12
Front Suspension.....Independent Dual A-Arm
Rear Suspension.....Swing Arm/ Double Oil Damped Shocks
Restraint System.....Dual 2-point harness

TIRE PRESSURE

Front.....15kPa 0.15kgf/cm2 2.2psi
Rear.....20kPa 0.20kgf/cm2 2.9psi

WEIGHT

Net Weight.....76Kg
Gross Weight..... 91Kg

OPERATION

A. Operation controls

Warning: Don't attempt to operate the engine until completely familiar with the location and use of each control necessary to operate this vehicle. Your youngster must know how to stop this machine before starting and driving it.

a. Throttle

The right foot pedal is the throttle that controls the MINI Shark-kart speed. As the engine speed increased above idle, the clutch automatically engages and moves the vehicle forward. To disengage the clutch at any time, allow the throttle to return to the idle position.(see Fig. 1)

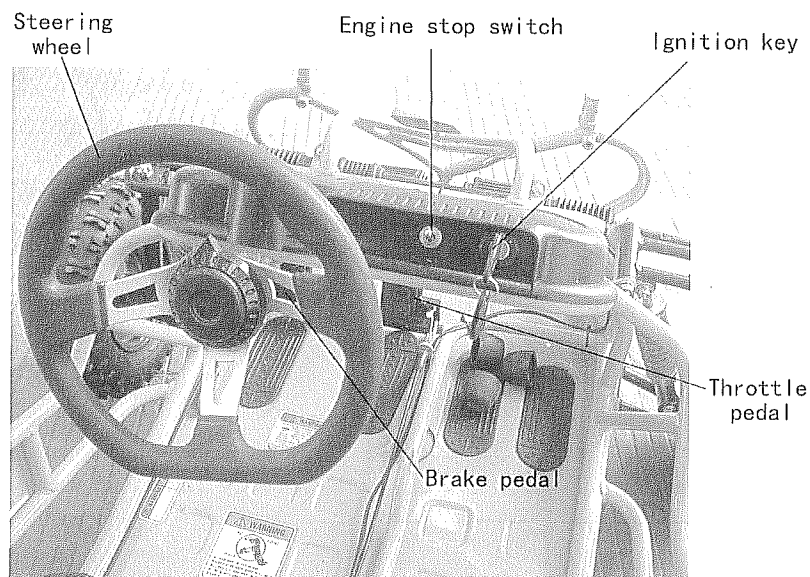


WARNING

Each time prior to starting engine, check the throttle assembly to ensure that when the pedal is pushed all the way forward the assembly is working smoothly and returns to idle when released. Do not operate if pedal or engine throttle linkage fail to return to idle. If unable to correct the problem through lubrication, adjustment or replacement of worn parts, contact your dealer for assistance.

b. Brake

The brake is located on the left side of the MINI Shark-kart. Applying pressure to the pedal draws the brake caliper around the brake disc at the rear wheel and slowly stops the MINI Shark-kart.



c. Start the engine in three ways:

You can start the engine by turning on the key switch from dash board. Plugging in the key

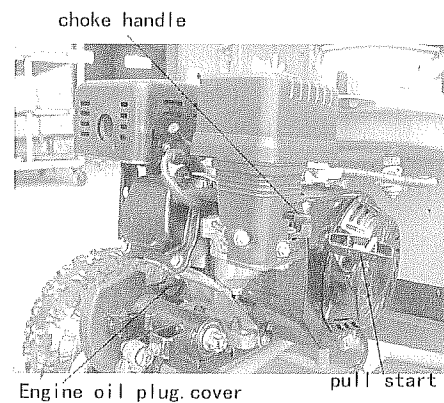
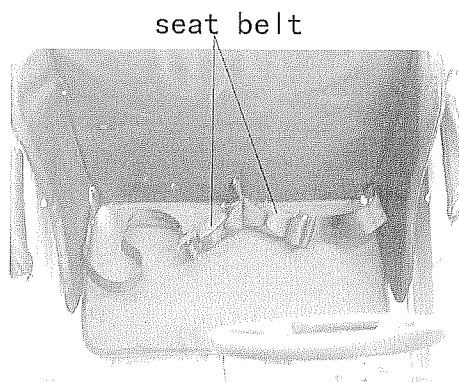
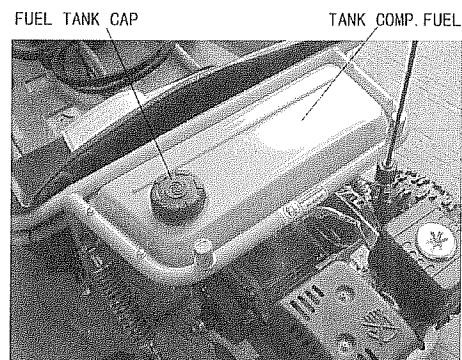
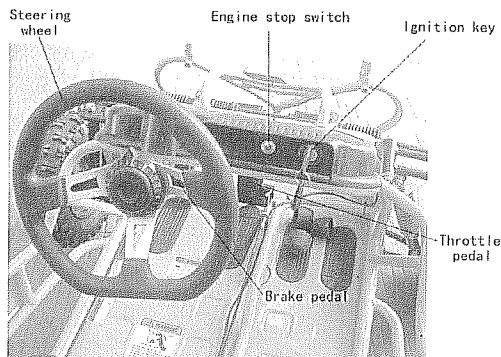


And turn to the right. Engine stop switch to "ON", Pull the start rope on the engine to start the engine .

NOTE: Make sure your key is turned to the running position.

d. Engine stop switch

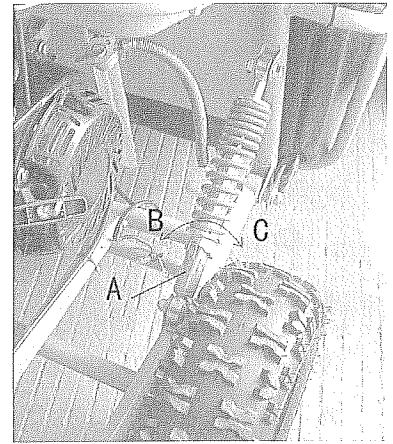
To stop the engine, switch off the engine stop switch, and hold turn the ignition key to the off position and remove the key.



ADJUSTING THE THROTTLE AND BRAKE CABLES

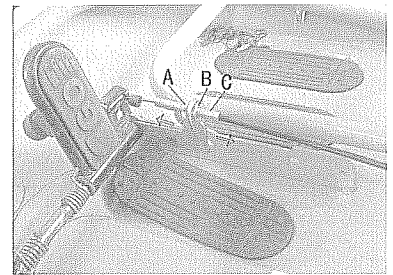
Adjustment the Shock spring

To change the setting of the shocks from hard to soft is easy, you will need to get a wrench at your local hardware store. Take your wrench and on the shock marked(A) you will see notches made for the wrench to hold on to. By turning the wrench left or right like (B) or (C) you can adjust the shock setting as you wish. Adjust the spring all the way to the left will give you a harder ride. If you wish to soften the ride then go all the way to right. Your kart has been fitted with two front shocks and two rear shocks so that you may tune your kart ride to best suit your riding comfort.



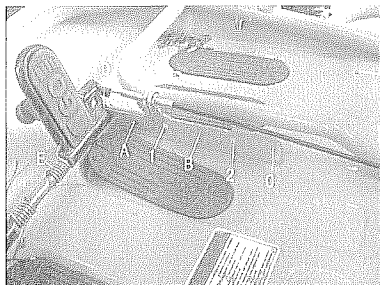
Adjusting the throttle and brake cable

To adjust the throttle cable or the brake cable on your kart you need to first untighten the nut marked(A) and (B). Once you have done this, pull back on the cable housing marked(C) to pull out the cable. Tighten nuts(B) and (A) to secure the slack in position. Try the pedals and make sure you are getting a good pulling from the cable itself. Once you are satisfied with the adjustment, secure all nuts to complete the adjustment.



Adjusting the foot pedals

This MINI kart has been made with foot pedals that can be moved so your child can grow with the MINI kart. First remove the bolts(A) and (D) in figure 6 and 7. Once you have done this, you are able to move the cable holder and the pedal rod with the pedals together. The 1 or 2 hole is for the pedal rod alternative positions, (B) or (C) hole is for the cable holder. There is only one bolt that holds the pedal rod in place. On the brake pedal side there is a slot for the pedal rod to fit into, once you have picked out the holes for setting, just slide the pedal rod and cable holder together and repeat the same steps to fasten all bolts and nuts. Remember not to take pedals off the rod. By doing so your spring can become loose. Make sure after you have done the adjustment, the pedals are working and will return to its original position..

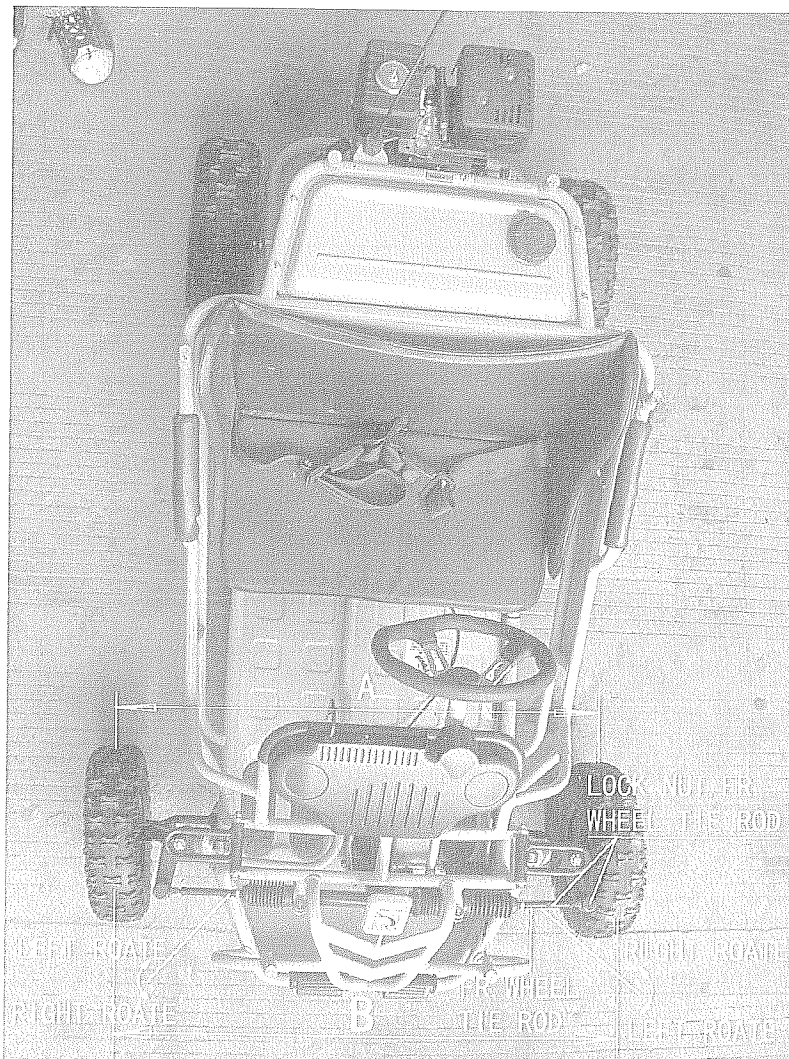


Front Wheel Alignment

a. The front wheels should toe-in from 1/8 to 1/4 inch. To check for alignment, measure distance A and B between the centerline (CL) of the wheels. The proper toe-in dimension A should be 1/8 to 1/4 inch greater than dimension B.

b. To adjust the alignments, loosen the lock nuts on both sides of Front Tie Rods.

To make Dimension B smaller, turn the rod to left. Adjust the rod to right direction to make Dimension B larger. After adjusting to the desired length, tighten the lock nut against the rod end. Recheck the dimension for proper alignment.



PERIODICAL CHECK AND SERVICES

The maintenance intervals in the following table are based upon average driving conditions driving in unusually dusty area requires more frequent servicing.

REGULAR SERVICE PERIOD			Each use	First month or 20 hrs.	Every 3 month or 50 hrs.	Every 6 month or 100 hrs.	Every year or 300 hrs.
●	Engine oil	Check	○				
		Replace		○		○	
●	Air Filter	Check	○		○(1)		
		Replace					**
●	Spark plug	Check-adjust				○	
		Replace					○
●	Spark arrester	Clean				○	
●	Idle speed	Check-adjust					○
●	Valve clearance	Check-adjust					○
●	Combustion chamber	Clean	After every 500 hrs				
●	Fuel tank strainer	Clean				○	
●	Fuel tube	Check	Every 2 years (Replace if necessary)				

CAUTION:

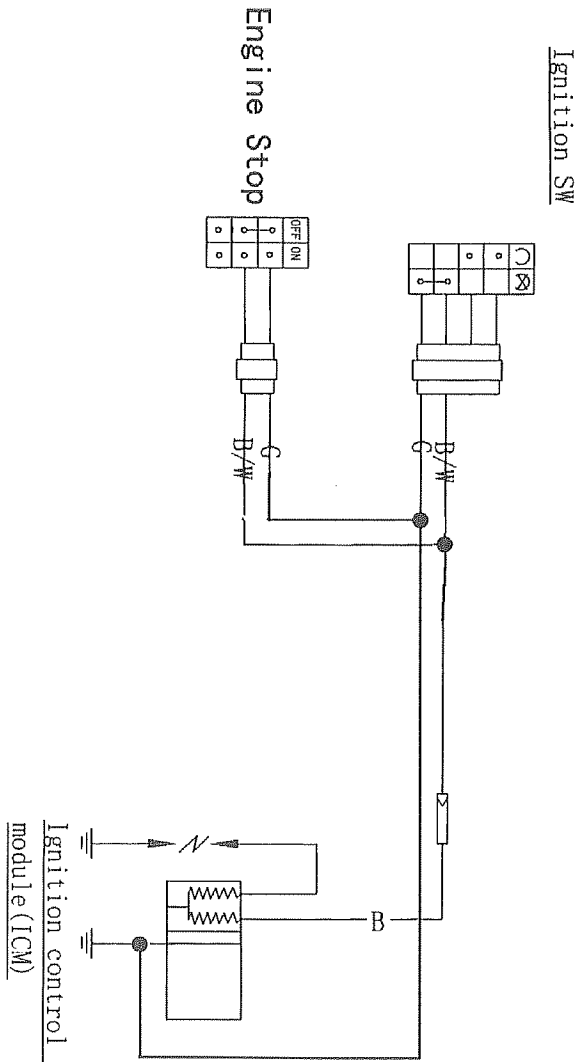
● Emission- rated items.

* Internal vent carburettor with dual element type only.(Cyclone type every 6 months or 150 hours.)

** Replace paper element type only.

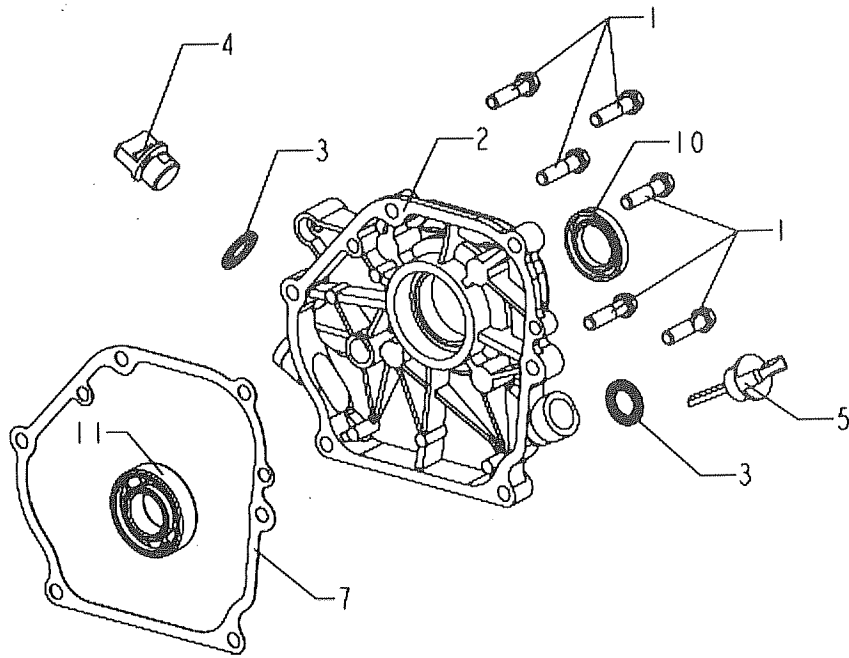
(1): For commercial use , log hours of operation to determine proper maintenance intervals.

ELECTRICITY PRINCIPLE DIAGRAM

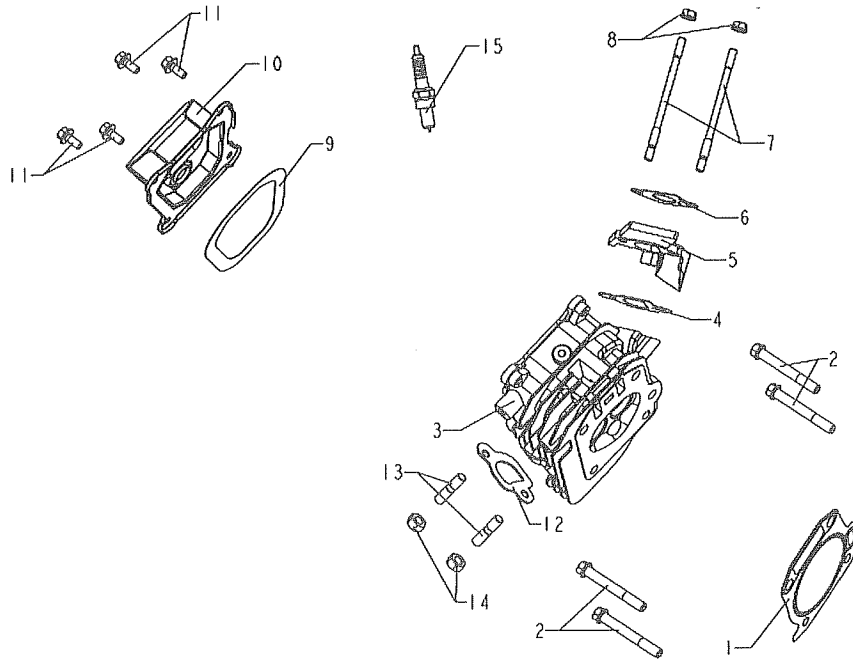


Black	B
Green	G
White	W

PARTS MANUAL

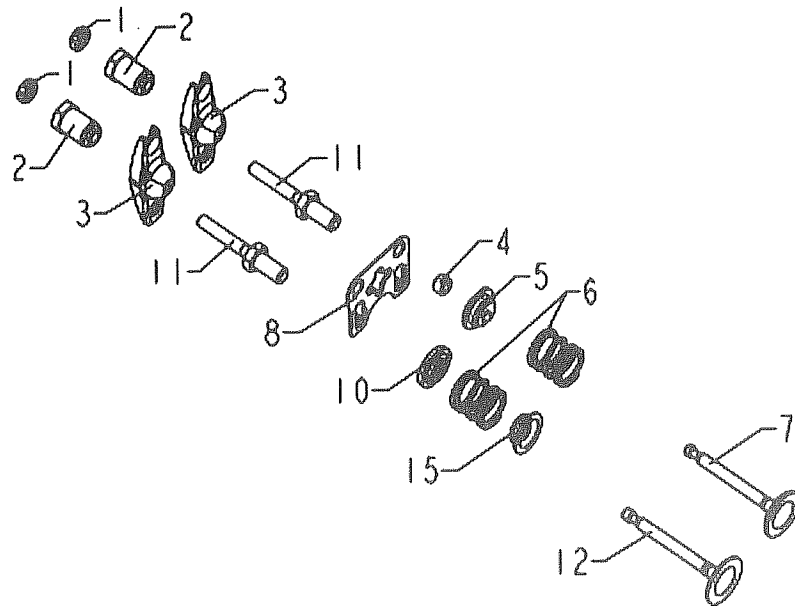


CRANKCASE ASSY			
REF NO.	PART NO.	DESCRIPTION	Qty.
(1)	26001K07F000	CRANKCASE ASSY	1
1	B01070803264	Bolt M8X30	6
2	14132K07F000	Cover,Crankcase	1
3	26132K07F000	Waasher,Seal	2
4	14216K07F000	Guage,Engine Oil	1
5	26131K07F000	Cover,Supply Oil Mouth	1
6	26218J01F000	Guide,Dowel	2
7	26201K07F000	Spacer,Crankcase	1
8	26133K07F000	Oilseal Assy	2
9	B12016600553	Bearing	2
10	26204L01F000	Spacer,Drain Plug	2
11	26202L01F000	Drain Plug	1
12	26001K07F000	Crankcase Assy	1
13	B01090602564	Bolt M6X25	1
14	26208J01F000	Guide,Dowel	2

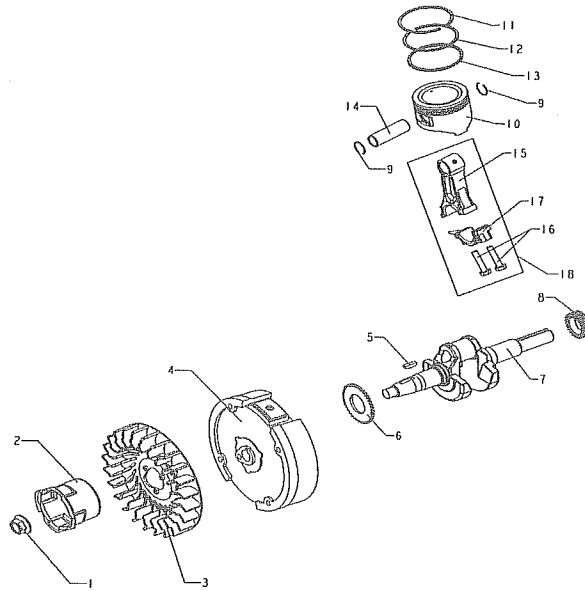


CRANKCASE ASSY

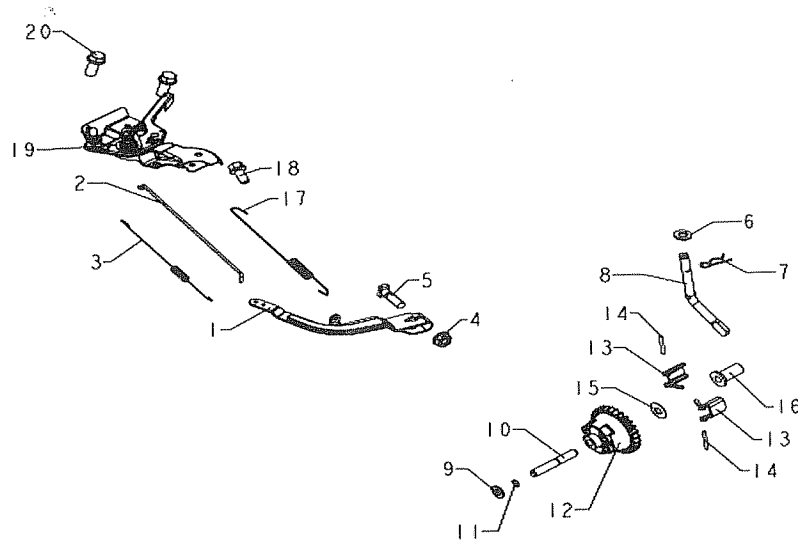
REF NO.	PART NO.	DESCRIPTION	Qty.
(2)	30500K14F000	CYLINDER HEAD ASSY	1
1	30707K07F000	Spacer Assy,Cylinder Head	1
2	B01070806064	Bolt M8X60,Cylinder Head	4
3	30730K07F000	Cylinder Head	1
4	30715K07F001	Spacer 1	1
5	30516K07F000	Mattress,Heat Insulating	1
6	30715K07F000	Spacer 2	1
7	30520K07F000	Bolt,Intake Pipe	2
8	B04070610064	Nut M6	2
9	30702K07F000	Spacer,Seal	1
10	168020010700	Clipboard	1
11	B01090601464	Bolt M6X14	4
12	36101K07F000	Spacer,Exhaust Pipe	1
13	30521K07F000	Bolt,Exhaust Pipe	2
14	B04000812564	Nut M8	2
15	30506G15F910	Spark Plug	1



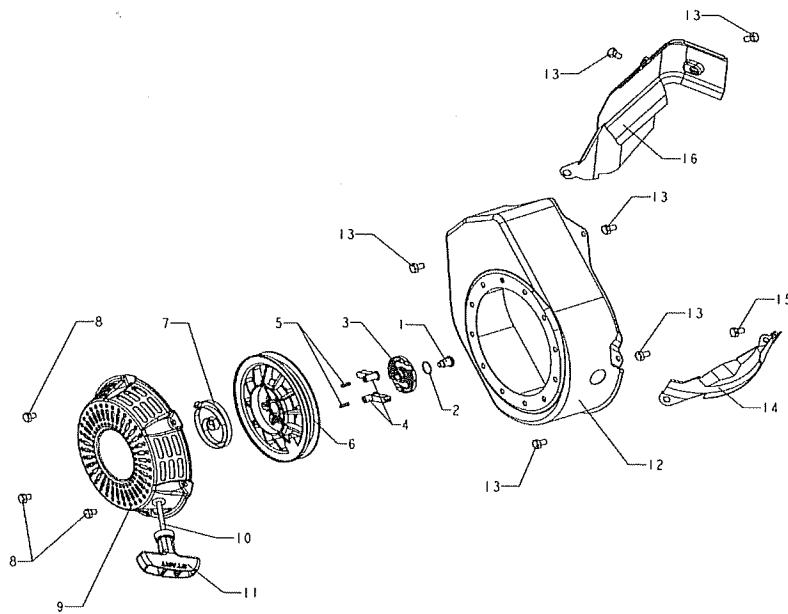
INTAKE EXHAUST MECHANISM ASSY			
REF NO.	PART NO.	DESCRIPTION	Qty.
(3)	27000K07F000	INTAKE EXHAUST MECHANISM ASSY	1
1	30302L01F000	Adjusting? Nut, Valve Clearance	1
2	30313Q01F000	Buttonhead, Arm	4
3	30301K07F000	Arm	1
4	30214K07F000	Cap, Exhaust Door Rod	1
5	30203K07F000	Upper Retainer, Exhaust Door Spring	1
6	30101K07F930	Spring, Valve	1
7	30201K07F000	Valve, Exhaust	2
8	30231K07F000	Guide Plate, Connecting Stud	2
9	30230K07F000	Rod, Connecting	1
10	30106K07F000	Upper Retainer, Intake Door Spring	1
11	30303Q01F930	Adjusting Stud, Valve Clearance	4
12	30103K07F000	Valve, Intake	1
13	30312K07F000	Stud, Connecting	2
14	30400K07F000	Camshaft	2
15	30104K07F000	Oilseal, Valve	1



BRANCE FLYING WHEEL			
REF NO.	PART NO.	DESCRIPTION	Qty.
(4)	15000K07F000	BRANCE FLYING WHEEL	1
1	15230K07F000	Nut, Clamp	1
2	17403K07F000	Ratchet Wheel	1
3	34381K07F000	Fan	1
4	34309K07F000	Flying Wheel	1
5	15116Q01F000	Key	1
6	15250K07F000	Driven Gear, Adjusting	1
7	168QDJ04-07C	Brance	1
8	15232K07F000	Gear, Crankshaft Timing	1
9	15106K07F000	Circlip, Piston Pin	2
10	15100K07F000	Piston	1
11	15103K07F000	Ring, First	1
12	15104K07F000	Ring, Second	1
13	15300K07F000	Oil Ring Assy	1
14	15105K07FF10	Pin, piston	1
15	15131K07F000	Rod, Connecting	1
16	15133L01F000	Bolt, Connecting Rod	2
17	15132K07F000	Cover, Connecting Rod	1
18	15130K07F000	Connecting Rod Assy	1

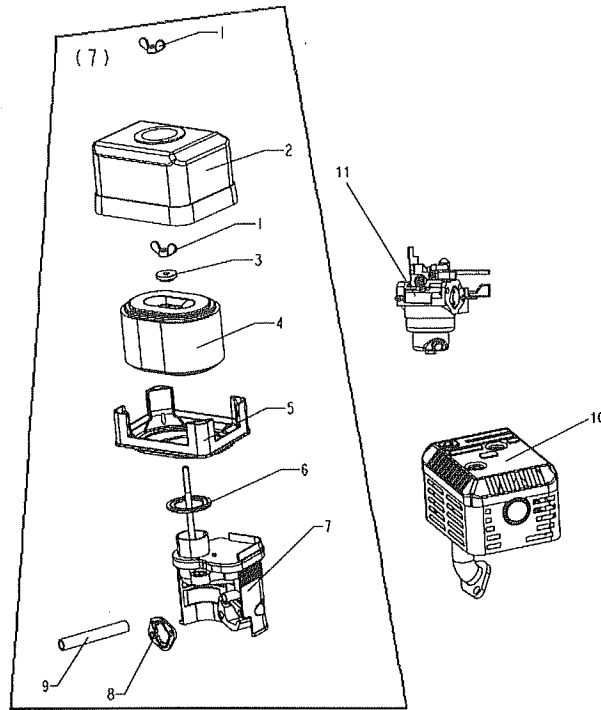


CENTRIFUGAL ADJUSTMENT ASSY			
REF NO.	PART NO.	DESCRIPTION	Qty.
(5)		CENTRIFUGAL ADJUSTMENT ASSY	1
1	17581K07F000	Arm	1
2	17594K07F000	Rod Tension	1
3	17593K07F000	Spring 2,Tension	1
4	B04070610064	Nut M6	1
5	17589Q01F920	Bolt,Square	1
6	17585K07F000	Spacer 2	1
7	17590Q01F000	Circlip	1
8	17582K07F000	Fork	1
9	17584L01F000	Spacer 1	1
10	17627K07F000	Pin	1
11	26146L01F000	Circlip	1
12	17587K07F000	Adjustment,Centrifugal	1
13	17588K07F000	Block,Centrifugal	2
14	17591K07F000	Pin	2
15	17586K07F000	Spacer 3	1
16	17583K07F000	Cover,Push Rod	1
17	168FJH7.03-01	Spring 1,Tension	1
18	B01090601064	Bolt M6X10	2
19	17550K42F000	Handle Assy	1
20	B01090602064	Bolt M6X25	1

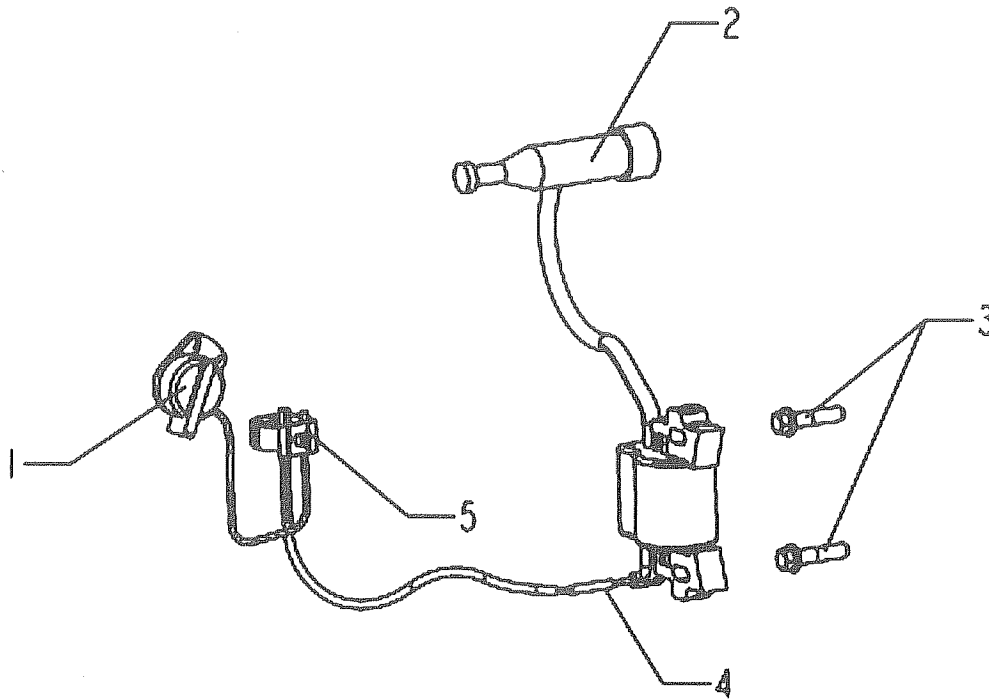


STARTING SETS

REF NO.	PART NO.	DESCRIPTION	Qty.
(6)	17150K07F000	STARTING SETS	1
1	17180K07F000	Screw	1
2	17156K07F000	Circlip	1
3	17157K07F000	Plate Guide	1
4	17158K07F000	Block Clutch	2
5	17162K07F000	Spring,Pressure	2
6	17155K07F000	Table,Rotary	1
7	17152K07F000	Spring,Turbinator	1
8	B01090608064	Bolt M6X8	3
9	17170K07F000	Cover,Starting	1
10	17160K07F000	Rope,Strating	1
11	17159K07F000	Handle	1
12	17187K07F000	Cowling	1
13	B01090601064	Bolt M6X10	6
14	17176K07F000	Plate 1 Driversion	1
15	B01090601464	Bolt M6X14	1
16	17178K07F001	Plate 2 Driversion	1



AIR CLEANER ASSY/MUFFLER ASSY/CARBURETOR ASSY			
REF NO.	PART NO.	DESCRIPTION	Qty.
(7)	168QDJ.07B	AIR CLEANER ASSY	1
1	B04030600040	Nut M6	2
2	168QDJ.07-04B	Cover,Filtering	1
3	168030100100	Seal	1
4	168030010900	Core,Filtering	1
5	168032270300	Bracket,Filtering	1
6	168030100200	Seal	1
7	168QDJ.07.01	Cover,Upper Body	1
8	37113K07F000	Seal,Air Cleaner	1
9	26400K07F000	Colloid Pipe	1
10	36000K07F000	MUFFLER ASSY	1
11	32500K07F000	CARBURETOR ASSY	1



SWITCH ASSY IGNITION			
REF NO.	PART NO.	DESCRIPTION	Qty.
(8)	168FJH-3.08	Switch Assy,Ignition	1
1	34500K14F000	Switch Assy,Engine stop	1
2	34350K07F000	Winding Assy	1
3	B01090602563	Bolt M6X25	2
4	34361K42F000	Connecting Wire Assy	1
5	17558K14F000	Clip	1

FRAME GROUP

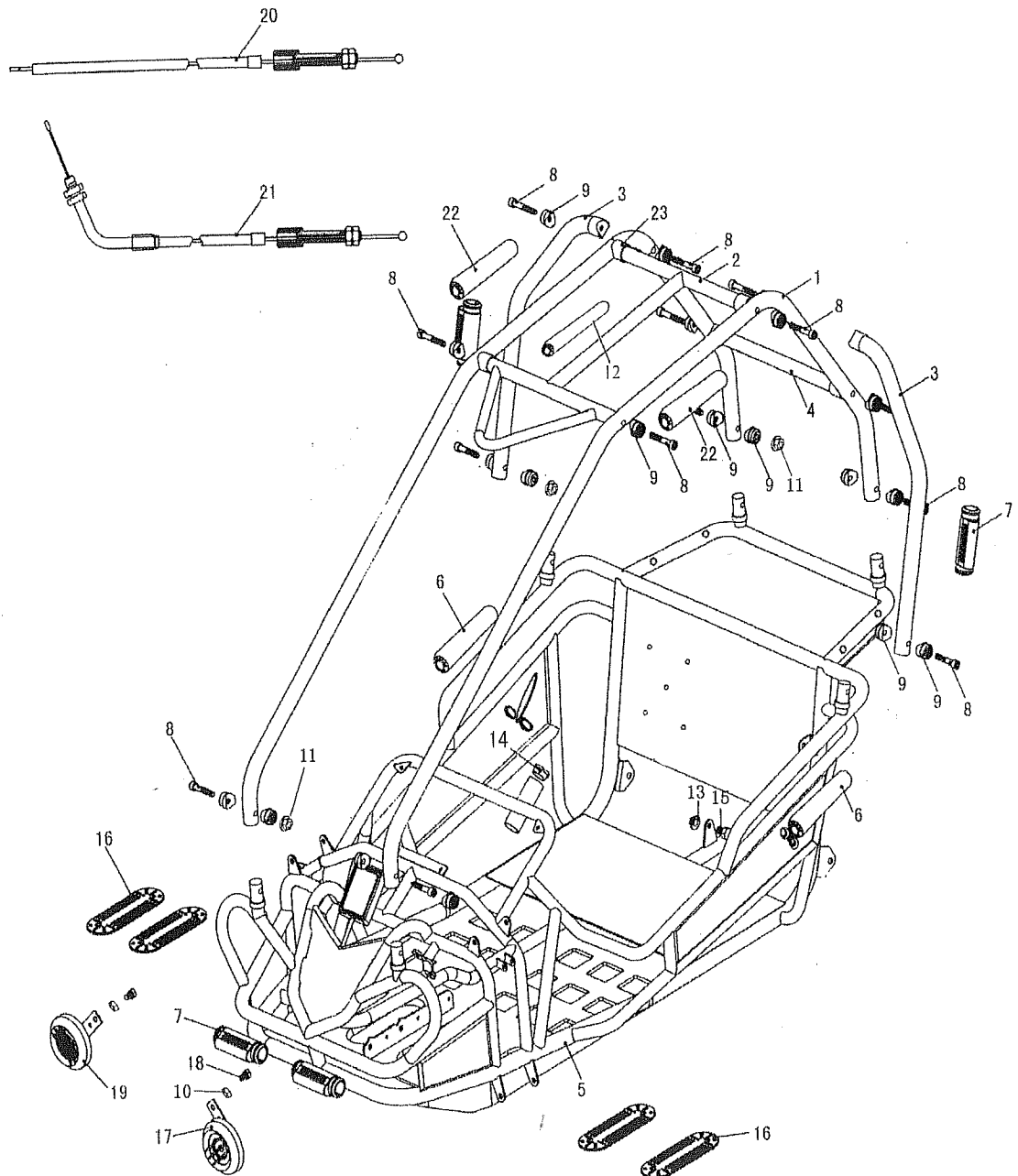


FIG.12 FRAME GROUP			
REF NO.	PART NO.	DESCRIPTION	Qty.
12-1	8.070.045-BK	CUSTOM BAR CAGE. Black	2
12-2	6.000.194-BK	CUSTOM CROSS BAR TOP, FR. Black	1
12-3	8.070.046-BK	CUSTOM J-BAR, L.R. SIDE Black	2
12-4	8.080.041-BK	CUSTOM CROSS BAR, RR. Black	1
12-5	2.000.037	FRAME COMP. (R.S.Y, P)	1
12-6	6.000.189	FOAM PADDING —22	2
12-7	7.020.048	RUBBER PROTECTOR	4
12-8	9.129.845	ALLEN HEAD BOLT M8×1.25×45	14
12-9	7.010.049	R-WASHER	20
12-10	9.200.008	NUT M8X1.25	2
12-11	9.220.008	NUT M8X1.25	6
12-12	6.000.191	FOAM PADDING	1
12-13	9.220.010	LOCKING FLANGE NUT, M10	1
12-14	7.010.006	STEERING SHAFT BUSH	1
12-15	9.110.016	ALLEN HEAD BOLT M10×1.25×16	1
12-16	7.020.045	RUBBER FOOT PLATE	4
12-17	6.000.135	HORN, H	1
12-18	9.129.816	FLANGE BOLT M8×1.25×16	2
12-19	6.000.136	HORN, L	1
12-20	6.030.132	THROTTLE,CABLE COMP.	1
12-21	6.000.133	BRAKE CABLE COMP.	1
12-22	6.000.190	FOAM PADDING —30	2
12-23	7.010.045	CUSTOM BAR CAGE CAP	8

STEERING SHAFT ASSY.

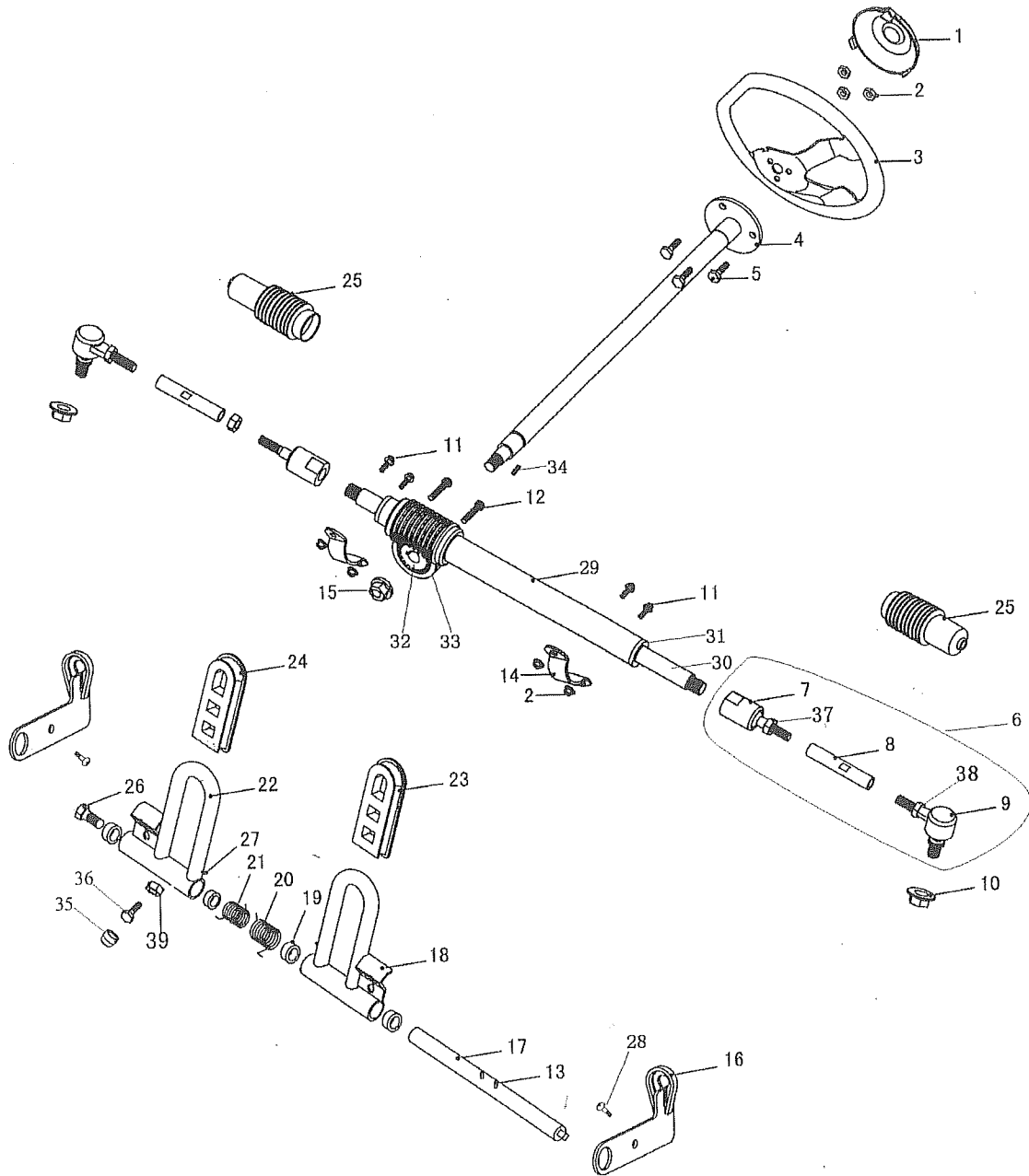


FIG.13 STEERING SHAFT ASSY			
REF NO.	PART NO.	DESCRIPTION	Qty.
13-1	7.010.056	STEERING BOLT COVER	1
13-2	9.210.006	LOCKING NYLON NUT M6	7
13-3	7.020.057	STEERING WHEEL	1
13-4	4.000.023	STEERING SHAFT	1
13-5	9.100.616	BOLT, M6×16	3
13-6	14-1000-00	TIE ROD ASSY	2
13-7	6.000.180	STEERING BALL JOINT	2
13-8	8.010.135	TIE ROD	2
13-9	6.000.181	ROD END	2
13-10	9.210.008	LOCKING NYLON NUT M8	2
13-11	9.106.020	FLANGE BOLT, M6×20	4
13-12	9.100.512	BOLT, M5×12	2
13-13	9.500.008	ROLL PIN Φ3×20	2
13-14	8.020.130	STEERING GEAR BRACKET.	2
13-15	9.220.010	LOCKING NUT M10	1
13-16	8.020.144	PEDAL BRACKET	2
13-17	8.010.103	PEDAL BOLT	1
13-18	4.000.025	BRAKE PEDAL COMP.	1
13-19	7.010.003	PEDAL BUSH	4
13-20	8.040.011	BRAKE PEDAL RETURN SPRING, R	1
13-21	8.040.010	THROTTLE PEDAL RETURN SPRING, L	1
13-22	4.000.026	THROTTLE PEDAL COMP.	1
13-23	7.020.043	BRAKE PEDAL PAD	1
13-24	7.020.044	THROTTLE PEDAL PAD	1
13-25	7.020.059	STEERING BALL JOINT DUST COVER	2
13-26	9.129.816	ALLEN HEAD BOLT M8×1.25×16	1
13-27	9.500.007	ROLL PIN M3×16	2
13-28	9.100.512	BOLT, M5×12	2
13-29	4.000.024	Steering Gear	1
13-34	14-1002-00	key 4x4x12	1
13-35	14-0502-00	Rubber Foot Pedal Stop	1
13-36	9.129.850	Alen Bolt M8x50	1
13-39	6.034.096		1

SUSPENSION ARM ASSY.

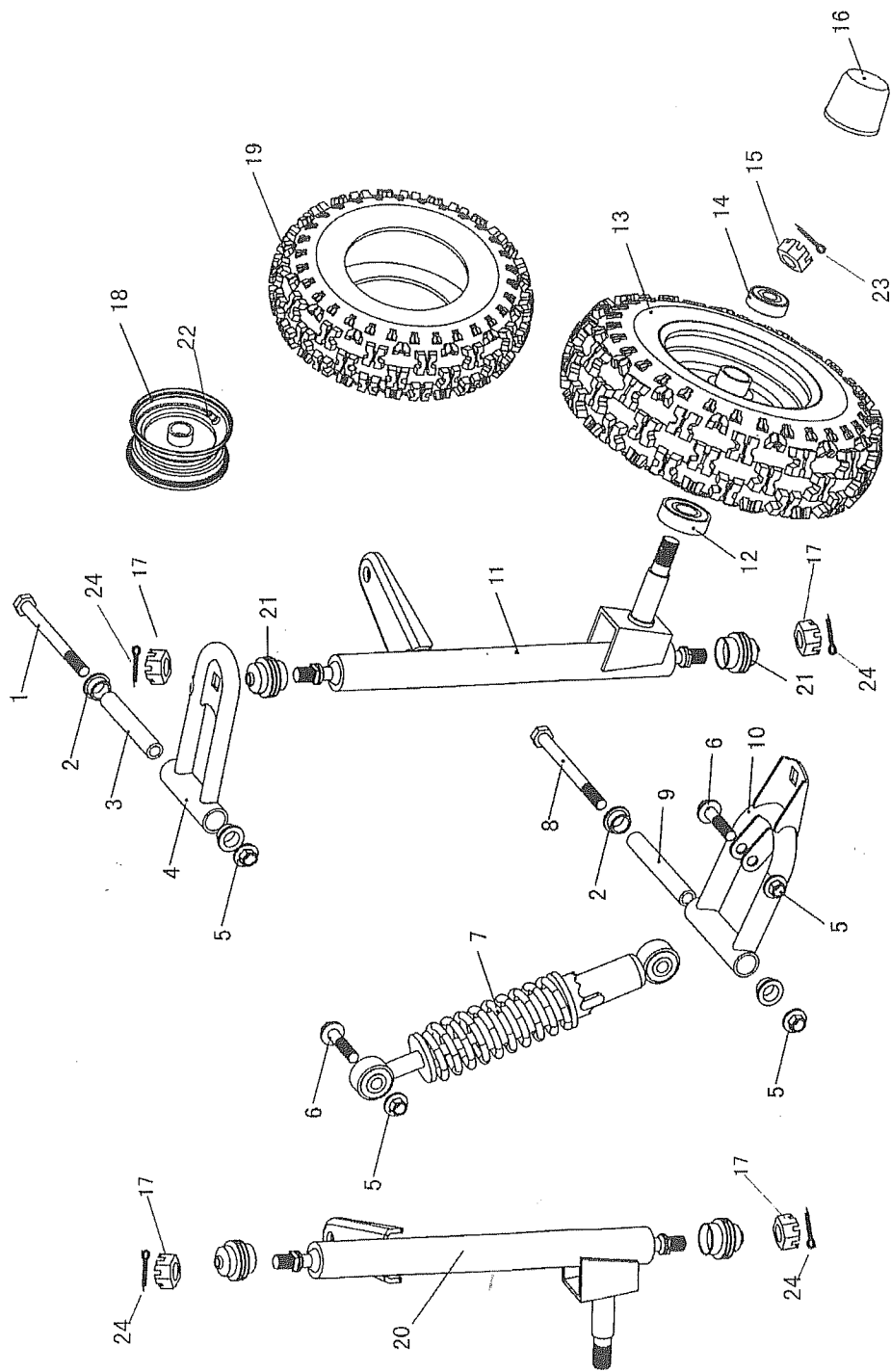


FIG.14 SUSPENSION ARM ASSY

REF NO.	PART NO.	DESCRIPTION	Qty.
14-1	9.108.095	FLANGE BOLT M8x1.25x95	2
14-2	7.010.003	UPPER SUSPENSION ARM BUSH.	8
14-3	8.010.104	UPPER SUSPENSION ARM COLLAR.	2
14-4	4.000.020	UPPER SUSPENSION ARM	2
14-5	9.320.008	LOCKING FLANGE NYLON NUT M8	8
14-6	9.108.030	FLANGE BOLT M8x1.25x30	4
14-7	6.000.172	CUSHION ASS'Y. FR.	2
14-8	9.108.105	FLANGE BOLT M8x1.25x105	2
14-9	8.010.015	LOWER SUSPENSION ARM COLLAR.	2
14-10	4.000.021	LOWER SUSPENSION ARM ASS'Y.	2
14-11	2.000.031	SPINDLE AND STRUT SUPPORT, R	1
14-12	9.030.010	BEARING 6202	2
14-13	6.100.169-BK	FRONT WHEEL ASSY.	2
14-14	9.030.009	BEARING 6201	2
14-15	9.800.012	NUT M12	2
14-16	7.020.039	HUB COVER. FR.	2
14-17	9.800.010	NUT M10	4
14-18	6.000.182-BK	RIM, FR	2
14-19	001-133506-00	TIRE, FR 13x3.5-6	2
14-20	2.000.032	SPINDLE AND STRUT SUPPORT, L	1
14-21	7.020.061	BALL HEAD DUST SEAL	4
14-22	7.190.018	Air Valve	2
14-23	005-2530-00	COTTER PIN Φ 2.5X30	2
14-24	005-2025-00	COTTER PIN Φ 2X25	4

REAR SWING ARM

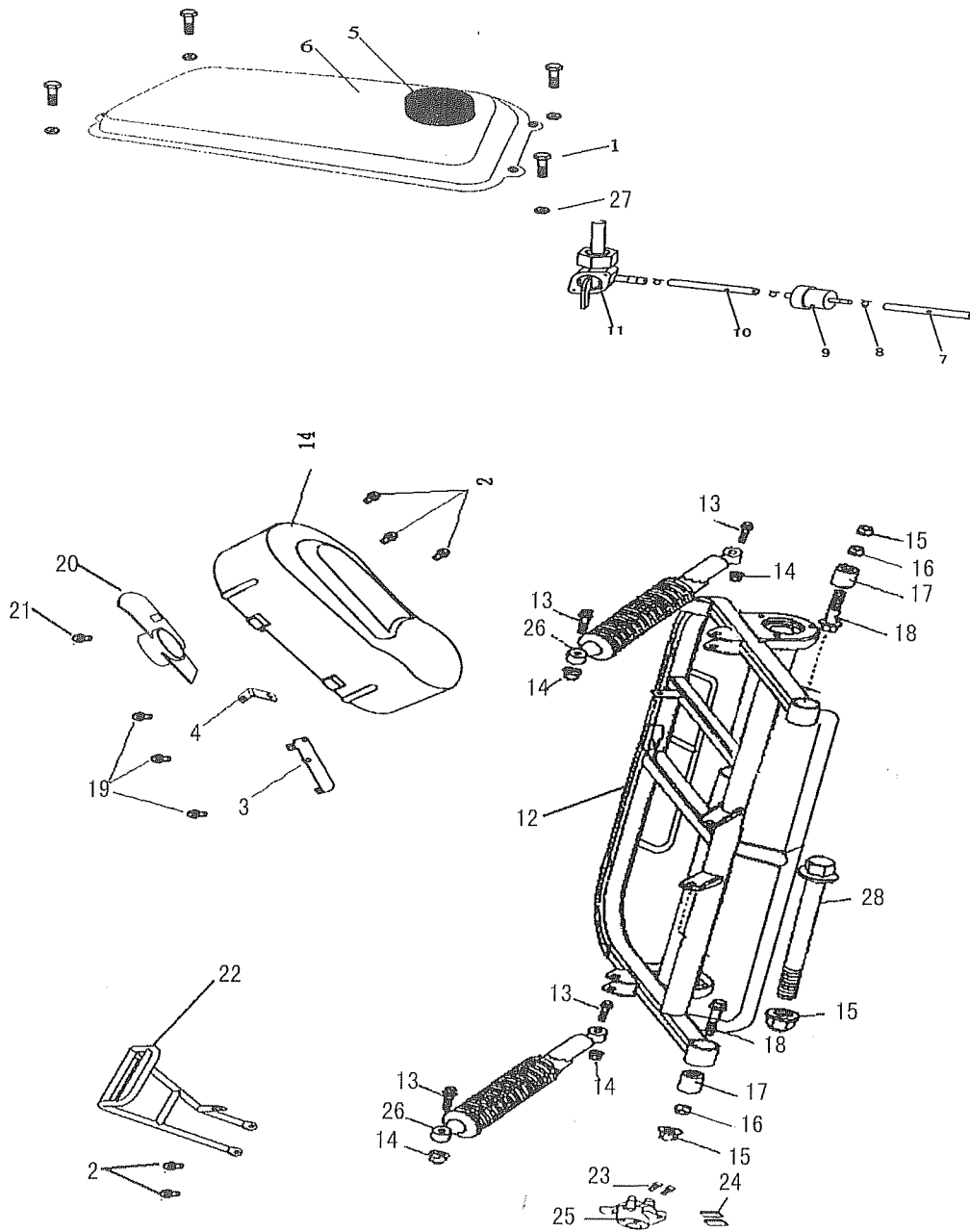


FIG.15 REAR SWING ARM			
REF NO.	PART NO.	DESCRIPTION	Qty.
15-1	9.106.032	FLANGE BOLT, M6×32	4
15-2	9.106.012	FLANGE BOLT M6×12	5
15-3	7.100.002	FIXER PLASTIC II	1
15-4	7.100.001	FIXER PLASTIC I	1
15-5	6.000.145	FUEL FILTER CAP COMP.	1
15-6	4.030.019	FUEL TANK COMP.	1
15-7	7.020.030	FUEL TUBE, #1	1
15-8	8.040.009	FUEL TUBE CLIP	4
15-9	6.000.056	FILTER	1
15-10	7.020.029	FUEL TUBE, #2	1
15-11	6.000.166	FUEL COCK ASS'Y	1
15-12	14-0602-00	REAR SWING ARM	1
15-13	9.108.030	FLANGE BOLT M8×1.25-30	4
15-14	9.320.008	LOCKING FLANGE NYLON NUT M8	4
15-15	9.220.010	LOCKING FLANGE NUT M10X1.25	3
15-16	9.200.010	NUT M10X1.25	2
15-17	7.020.056	REAR SWING ARM BUSH	2
15-18	9.110.050	FLANGE BOLT M10×1.25X50	2
15-19	9.108.016	FLANGE BOLT M8×16	3
15-20	14-0207-00	Plastic Chain Guard 2	1
15-21	003-050030-00	BOLT M5X30	1
15-22	14-0603-00	Exhaust Guard, Stand	1
15-23	9.129.616	ALLEN BOLT M6×16	2
15-24	7.120.060	BRAKE PAD SET, RR	1
15-25	6.000.178	CALIPER ASSY. RR	1
15-26	6.000.173	CUSHION ASS'Y. RR	2
15-27	9.210.006	NYLON NUT M6	4
15-28	9.110.180	FLANGE BOLT M10×1.25X180	1

REAR HOUSING

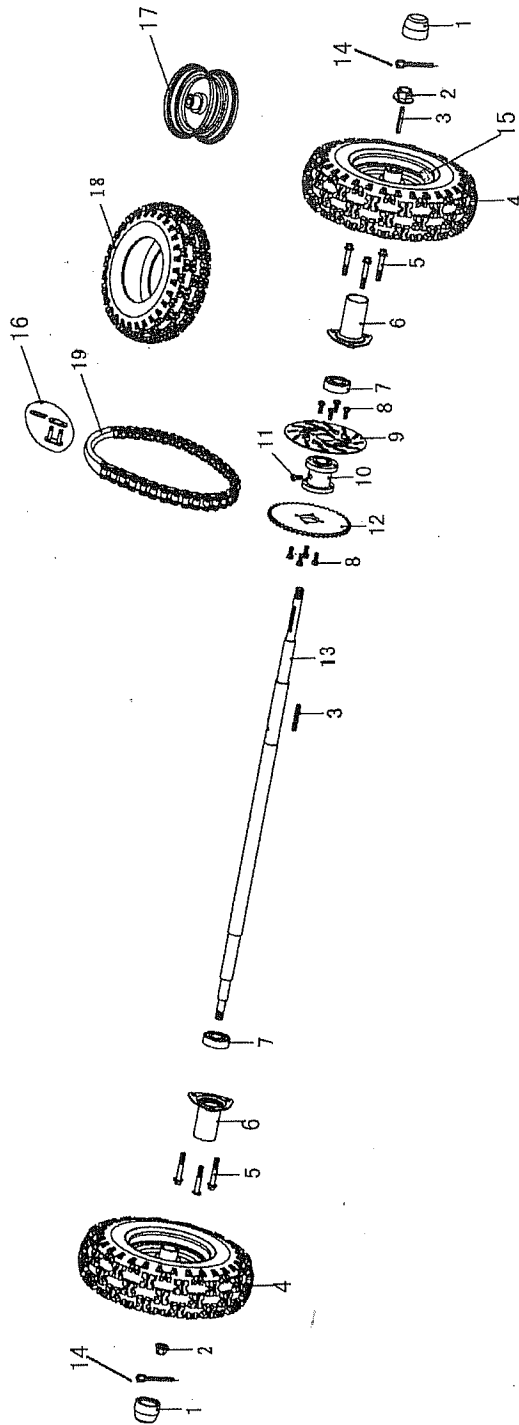


FIG.16 REAR HOUSING

REF NO.	PART NO.	DESCRIPTION	Qty.
16-1	7.020.039	HUB COVER, RR.	2
16-2	9.220.016	LOCKING FLANGE NUT M16	2
16-3	8.010.138	AXLE KEY	3
16-4	6.000.170-BK	REAR WHEEL ASS'Y.	2
16-5	9.108.016	FLANGE BOLT M8×1.25×16	6
16-6	6.000.196	AXLE COVER	2
16-7	9.030.002	BEARING, 6204	2
16-8	9.106.016	FLANGE BOLT M6×16	8
16-9	8.010.098	DISC, BRAKE. RR.	1
16-10	8.010.097	REAR AXLE HUB	1
16-11	9.129.810	ALLEN HEAD BOLT M8×1.25×10	1
16-12	8.010.099	REAR SPROCKET	1
16-13	14-1101-00	REAR AXLE	1
16-14	005-3040-00	cotter Pin 3 x 40	2
16-15	7.190.018	Air Valve	2
16-16	6.000.199	MASTER LINK	1
16-17	6.000.183-BK	RIM, RR.	2
16-18	001-136005-00	TIRE, RR 13 x 6 -5	2
16-19	9.070.004	DRIVE CHAIN	1

WIRE HARNESS / ELECTRICAL / SEAT / CLUTCH ASSY

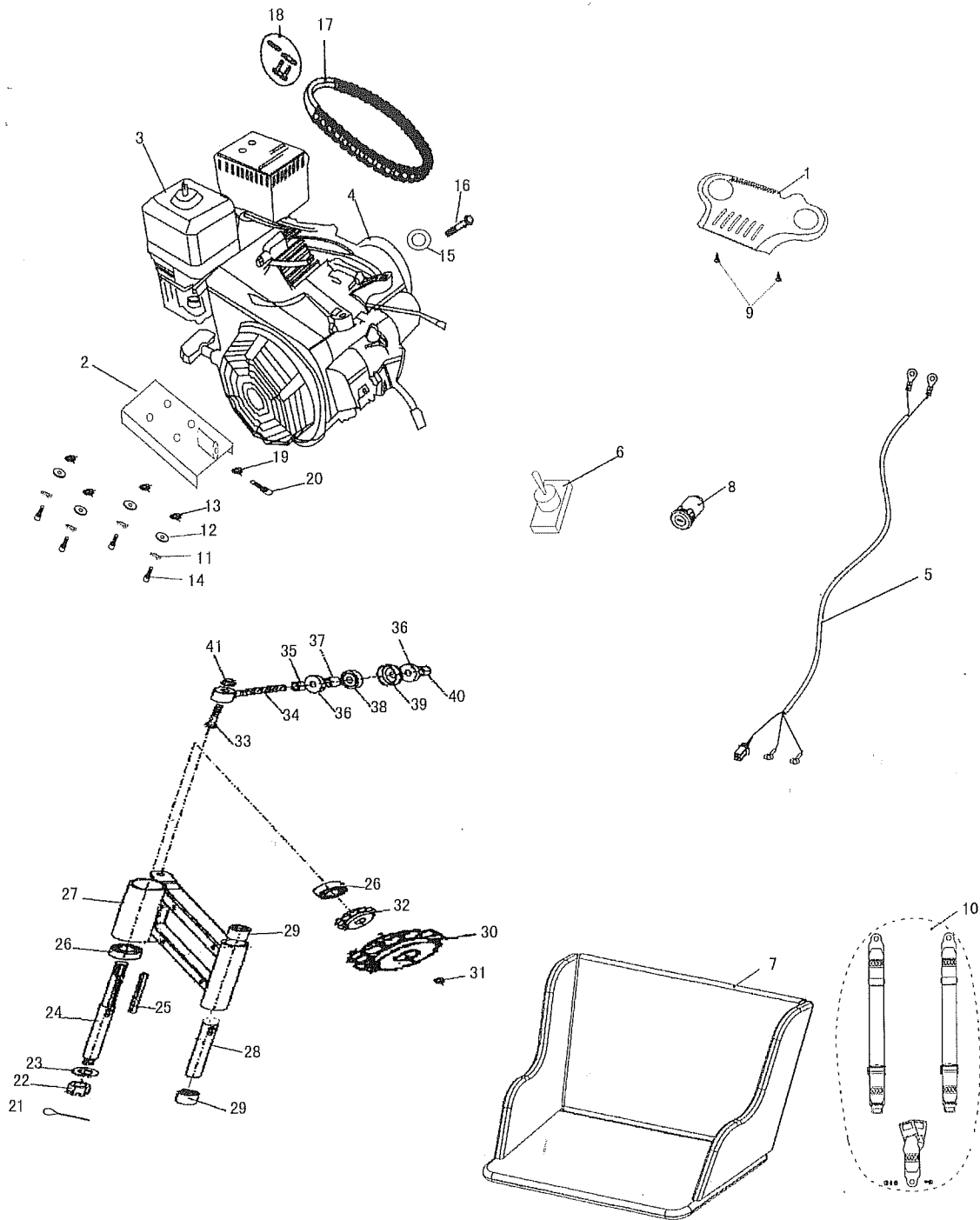


FIG.17 WIRE HARNESS / ELECTRICAL / SEAT			
REF NO.	PART NO.	DESCRIPTION	Qty.
F17-1	14-0205-00	SWITCH PANEL COVER	1
F17-2	14-0604-00	Engine Mounting Plate	1
F17-3	006-QJ55-00	ENGINE COMP.	1
F17-4	14-1102-00	Clutch	1
F17-5	14-0303-00	WIRE HARNESS	1
F17-6	14-0304-00	ENGINE STOP BUTTON	1
F17-7	6.000.176	SEAT COMP.	1
F17-8	6.000.165	POWER ON SWITCH	1
F17-9	003-520013-00	Self Tapping Screw 4.2 x 13	4
F17-10	6.000.179	SAFETY BELT	1
F17-11	12.022.035	Spring Washer	4
F17-12	007-08-00	Flat Washer	4
F17-13	9.220.008	LOCKING FLANGE NUT M8	4
F17-14	9.108.055	BOLT M8X55	4
F17-15	GB96-85	Clutch Washer Φ 8 (GB96)	1
F17-16	GB5783-86-20	BOLT M8X20	1
F17-17	14-1103-00	DRIVE CHAIN	1
F17-18	6.000.324	MASTER LINK	1
F17-19	6.034.096	NUT M8	1
F17-20	12.100.030	BOLT M8X45	1
F17-21	005-2530-00	COTTER PIN Φ 2.5X30	1
F17-22	9.800.014	CASTLE NUT M14X1.5	1
F17-23	9.300.014	WASHER ϕ 14	1
F17-24	14-1104-00	Shaft, Sprocket and Drive Pulley	1
F17-25	14-1105-00	Rear Clutch Axle Key	1
F17-26	6.000.065	BEARING 6004	2
F17-27	14-0605-00	ENGINE MOUNTING PLATE (2)	1
F17-28	14-0503-00	Bushing, Rubber	1
F17-29	7.020.077	BUSHING	2
F17-30	008-30-428	30 Teeth Sprocket	1
F17-31	GB9459-88-16	NUT M16X1.5	1
F17-32	008-13-06B	13 Teeth Sprocket	1
F17-33	GB5785-86-45	BOLT M10X1.25X45	1
F17-34	8.147.008	CHAIN ADJUSTER	1
F17-35	9.200.012	NUT M12X1.25	1
F17-36	8.010.042	WASHER-CHAIN ADJUSTER	2
F17-37	8.010.041	BUSHING-CHAIN ADJUSTER	1
F17-38	7.020.001	CAP WASHER-CHAIN ADJUSTER	1
F17-39	8.020.045	BOTTOM CAP WASHER-CHAIN ADJUSTER	1
F17-40	9.220.012	NUT M12X1.25	1
F17-41	9.220.010	NUT M10X1.25	1



FIG.18 WARNING STICKERS			
REF NO.	PART NO.	DESCRIPTION	Qty.
F18-1	14-1201-00	LABEL SEAT BELT	1
F18-2	14-1202-00	LABEL NO CLIMBING	1
F18-3	14-1203-00	LABEL WARNING Operation	1
F18-4	14-1204-00	LABEL CHAIN GUARD	1
F18-5	14-1205-00	LABEL NO LONG HAIR	1
F18-6	14-1206-00	LABEL AGE	1
F18-7	14-1207-00	LABEL HOT SURFACES	1
F18-9			
F18-11	14-1208-00	OWNER'S MANUAL	1