

Owner's Manual

Parts Manual

**READ THIS MANUAL CAREFULLY
IT CONTAINS IMPORTANT SAFETY INFORMATION**

HH-80T

**MINIMUM
RECOMMENDED
OPERATOR AGE: 13+**

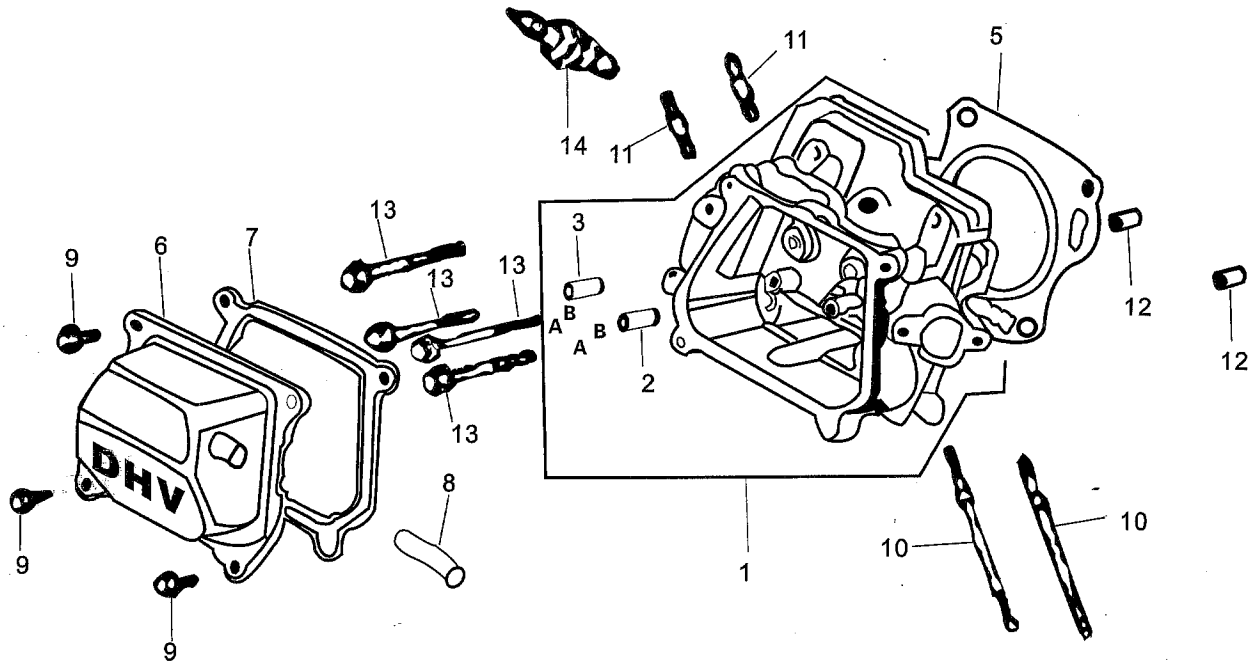


FOR OFF-ROAD USE ONLY

This vehicle is designed and manufactured for off-road use only.

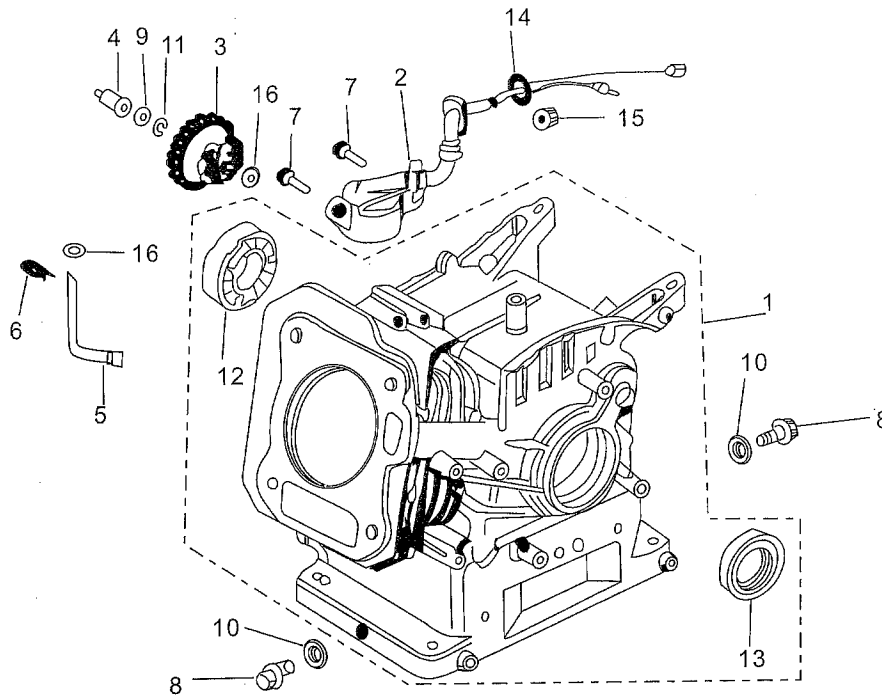
USA only:

It does not conform to Federal Motor Vehicle Safety Standards, and in regards to operation on public streets, roads, or highways is illegal.



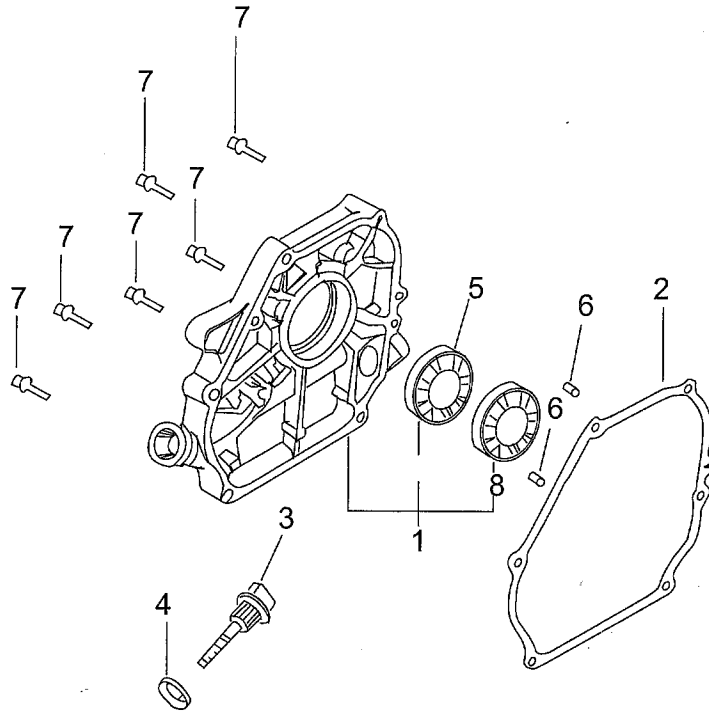
CYLINDER HEAD SYSTEM ASSY

REF NO.	PART NO.	DESCRIPTION	REGD NO.
1	JF168-A-01	CYLINDER HEAD COMP.	1
2	JF168-A-02	IN. VALVE GUIDE	1
3	JF168-A-03	EX. VALVE GUIDE	1
4	JF168-A-04	VALVE GUIDE CLIP	2
5	JF168-A-05	CYLINDER HEAD GASKET	1
6	JF168-A-06	HEAD COVER COMP.	1
7	JF168-A-07	HEAD COVER PACKING	1
8	JF168-A-08A	BREATHER TUBE	1
9	JF168-A-09	FLANGE BOLT (M6X12)	4
10	JF168-A-10A	CARBURETOR STUD BOLT	2
11	JF168-A-11A	EXHAUST PIPE STUD BOLT	2
12	JF168-A-12	DOWEL PIN (10X16)	2
13	JF168-A-13	FLANGE BOLT (M8X58)	4
14	JF168-A-14	SPARK PLUG (LD NGK)	1

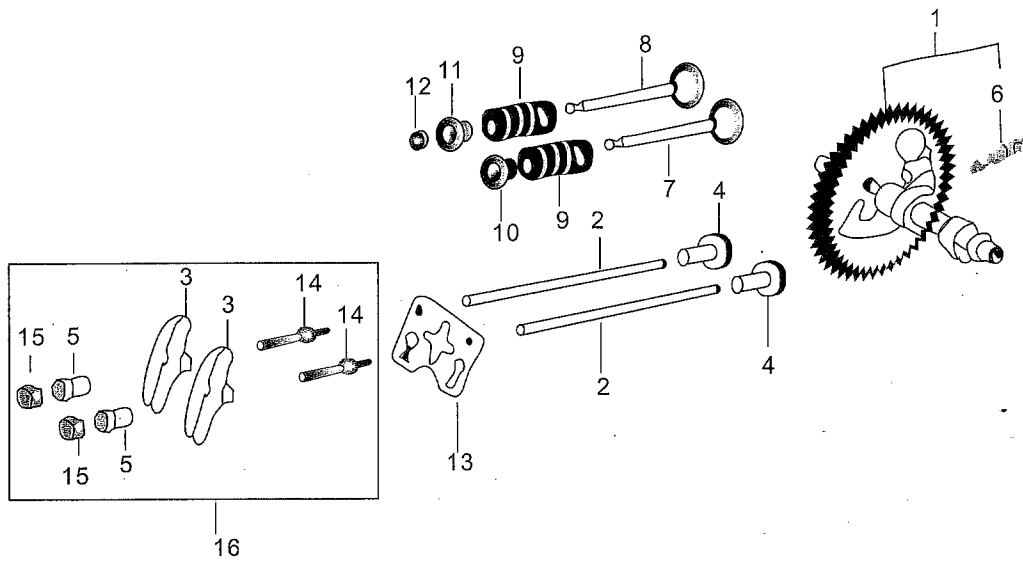


CYLINDER BARREL

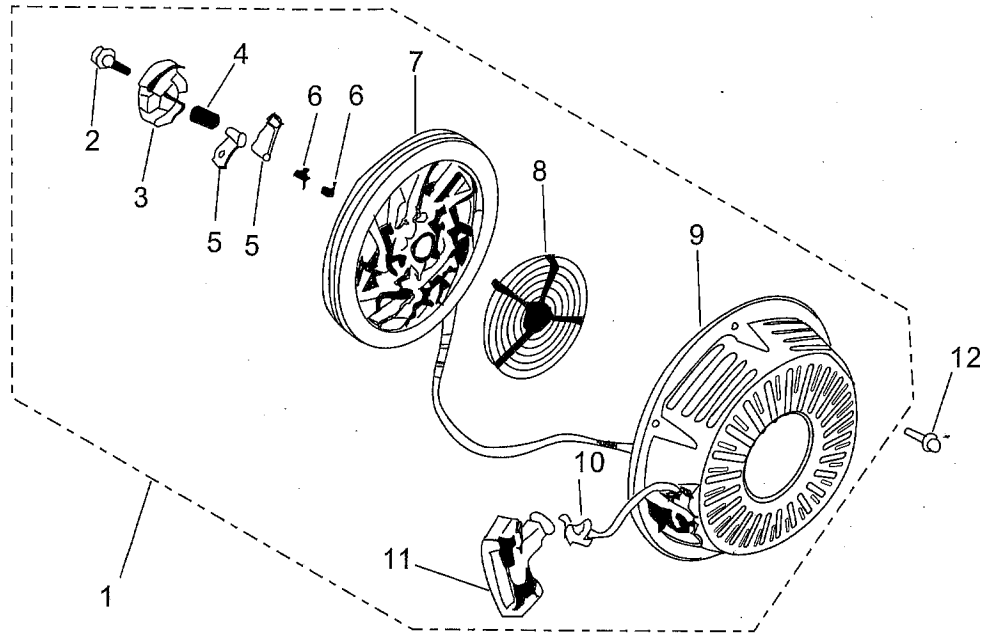
REF NO.	PART NO.	DESCRIPTION	REGD NO.
1	JF168-B-01	CRANK CASE	1
2	JF168-B-02	OIL LEVEL SWITCH ASSY.	1
3	JF168-B-03	GOVERNOR GEAR ASSY.	1
4	JF168-B-04	GOVERNOR SLIDER	1
5	JF168-B-05	ROCKER	1
6	JF168-B-06	LOCK PIN (8mm)	1
7	JF168-B-07	FLANGE BOLT (M6X 20)	2
8	JF168-B-08	DRAIN PLUG BOLT	2
9	JF168-B-09	SLIDER WASHER (6mm)	1
10	JF168-B-10	DRAIN PLUG WASHER (10.2mm)	2
11	JF168-B-11	GOVERNOR HOLDER CLIP	1
12	JF168-B-12	BALL BEARING (6205) (TPI)	1
13	JF168-B-13	OIL SEAL (φ 25X φ 41.25X 6)	1
14	JF168-B-14	O-RING (14mm)	1
15	JF168-B-15	FLANGE NUT (M10)	1
16	JF168-B-16	GOVERNOR GEAR (6mm)	2



STEERING SHAFT ASSY				
REF NO .	PART NO .	DESCRIPTION	REGD NO .	
1	JF168-C-01A	CRANKCASE COVER ASSY.	1	
2	JF168-C-02	CASE COVER PACKING	1	
3	JF168-C-03A	OIL SCALE	2	
4	JF168-C-04	OIL SCALE SEAL RING	2	
5	JF168-B-13	OIL SEAL (φ 25X φ 41.25X 6)	1	
6	JF168-C-05	DOWELPIN (8X 14)	2	
7	JF168-C-06	FLANGE BOLT (M8X 28)	6	
8	JF168-B-12	BALL BEARING (6205)	1	

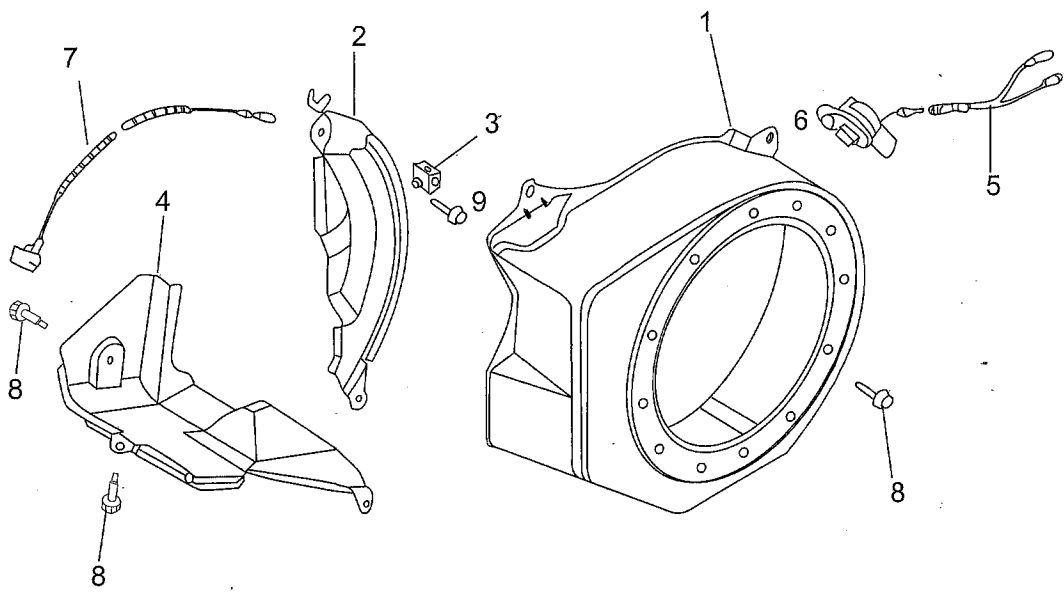


STEERING SHAFT ASSY				
REF NO .	PART NO .	DESCRIPTION	REGD NO .	
1	JF168-F-01A	CAMSHAFT ASSY.	1	
2	JF168-F-02	PUSH ROD	2	
3	JF168-F-03	ROCKER ARM	2	
4	JF168-F-04	VALVE LIFTER	2	
5	JF168-F-05	ADJUSTING NUT	2	
6	JF168-F-06	WEIGHT RETURN SPRING	1	
7	JF168-F-07	IN. VALVE	1	
8	JF168-F-08	EX. VALVE	1	
9	JF168-F-09	VALVE SPRING	2	
10	JF168-F-10	IN. VALVE SPRING RETAINER	1	
11	JF168-F-11	EX. VALVE SPRING RETAINER	1	
12	JF168-F-12	EX. VALVE HELMET	1	
13	JF168-F-13	PUSH ROD GUIDE PLATE	1	
14	JF168-F-14	ROCKER BOLT (M8)	2	
15	JF168-F-15	LOCKNUT	2	
16	JF168-F-16	ROCKER ASSY.	1	

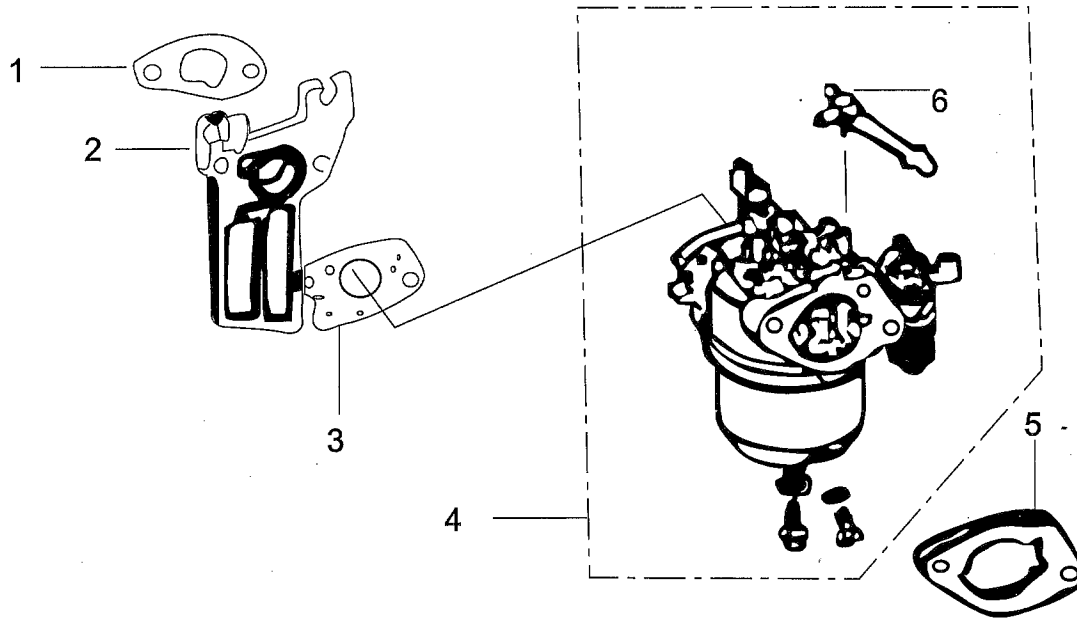


RECOIL STARTER SYSTEM ASSY

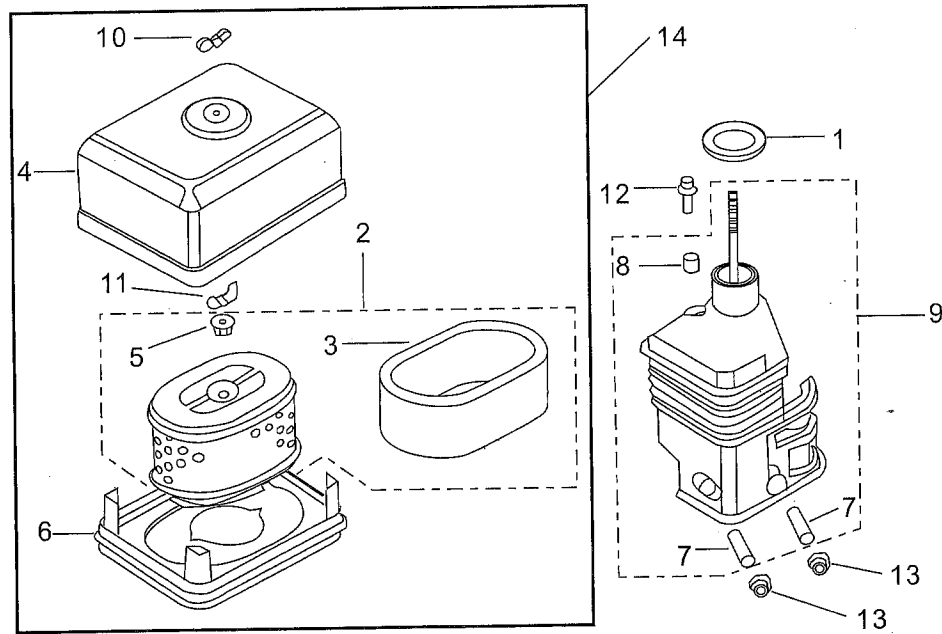
REF NO.	PART NO.	DESCRIPTION	REGD NO.
1	JF168-G-01	RECOIL STARTER ASSY.	1
2	JF168-G-02	SETTING SCREW	1
3	JF168-G-03	RATCHET GUIDE	1
4	JF168-G-04	FRICTION SPRING	1
5	JF168-G-05	STARTER RATCHET	2
6	JF168-G-06	RATCHET SPRING	2
7	JF168-G-07	RECOIL STARTER REEL	1
8	JF168-G-08	RECOIL STARTER SPRING	1
9	JF168-G-09	RECOIL STARTER CASE COMP.	1
10	JF168-G-10	RECOIL STARTER ROPE	1
11	JF168-G-11	STARTER GRIP	1
12	JF168-G-12	FLANGE BOLT (M6X 8)	3



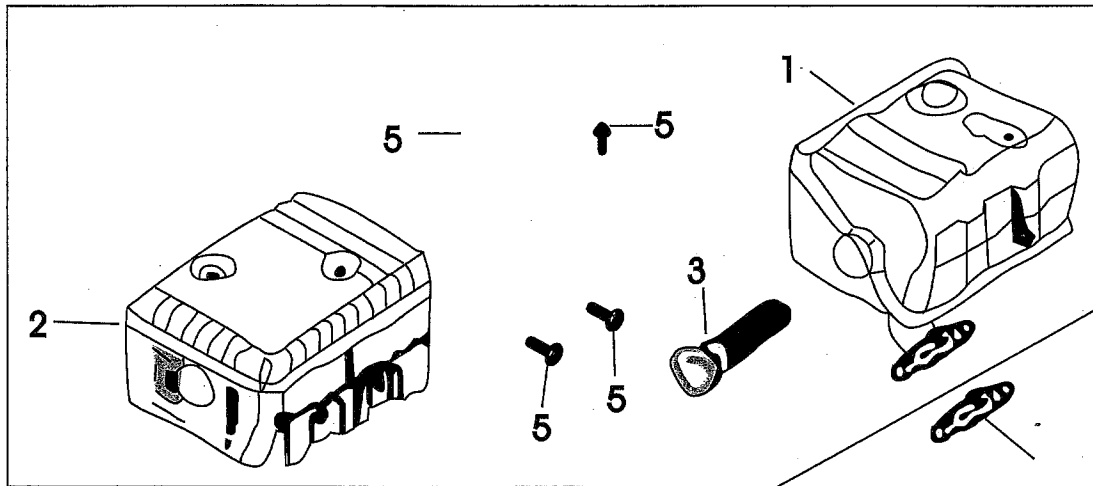
FAN COVER SYSTEM ASSY				
REF NO .	PART NO .	DESCRIPTION	REGD NO .	
1	JF168-H-01	FAN COVER COMP.	1	
2	JF168-H-02	FLYWHEEL SIDE PLATE	1	
3	JF168-H-03	CORD CLAMPER	1	
4	JF168-H-04	SHROUD	1	
5	JF168-H-05	SUB-HARNESS	1	
6	JF168-H-06	ENGINE STOP SWITCH ASSY.	1	
7	JF168-H-07	STOP SWITCH WIRE	1	
8	JF168-H-08	FLANGE BOLT (M6X 12)	6	
9	JF168-H-09	FLANGE BOLT (M6X 16)	1	



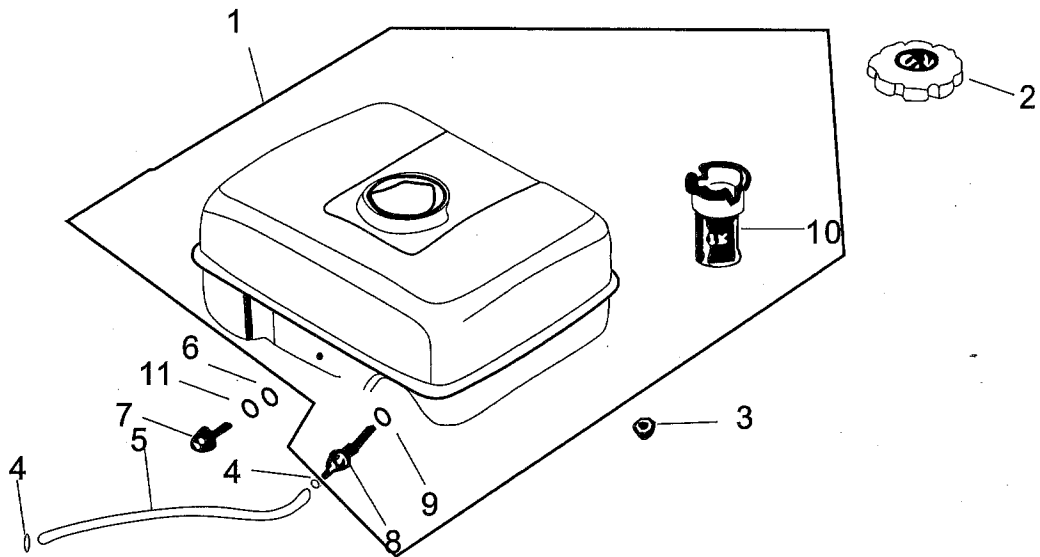
CARBURETOR SYSTEM ASSY				
REF NO .	PART NO .	DESCRIPTION	REGD NO .	
1	JF168-I-01	INTAKE PIPE GASKET	1	
2	JF168-I-02	CARBURETOR INSULATING PLATE	1	
3	JF168-I-03	CARBURETOR PAPER GASKET	1	
4	JF168-I-04	CARBURETOR	1	
5	JF168-I-05	CARBURETOR SPACER COMP.	1	
6	JF168-I-06	CHOKE LEVER COMP.	1	



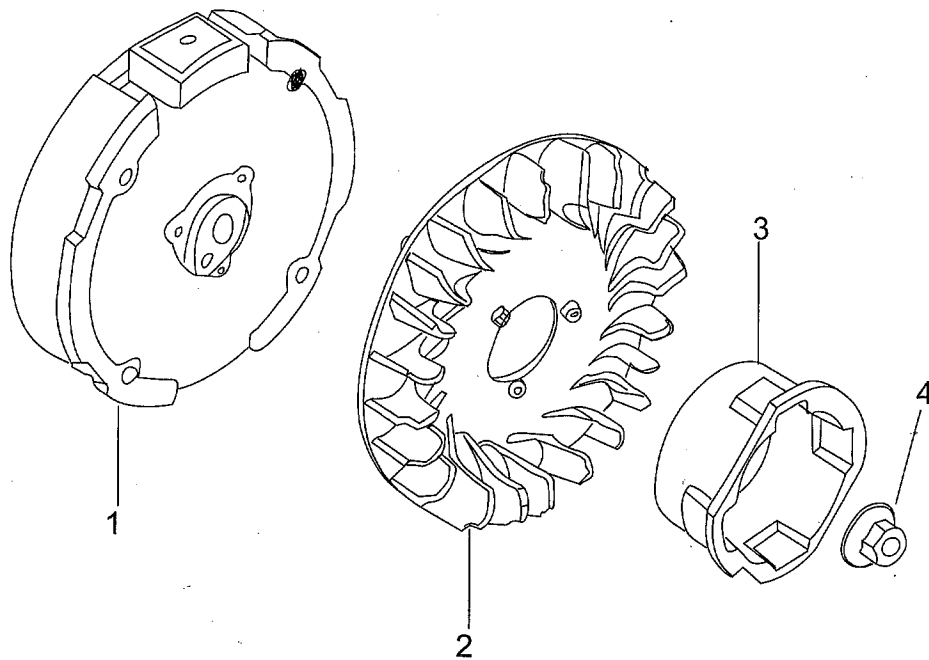
AIR CLEANER				
REF NO .	PART NO .	DESCRIPTION	REGD NO .	
1	JF168-K-01	ELBOW GASKET	1	
2	JF168-K-02	AIR CLEANER ELEMENT	1	
3	JF168-K-03	OUTER FILTER	1	
4	JF168-K-04	AIR CLEANER COVER	1	
5	JF168-K-05	AIR CLEANER GROMMET	1	
6	JF168-K-06	SILENCER NOSE	1	
7	JF168-K-07	INTAKE PIPE LONG BOLT COLLAR	2	
8	JF168-K-08	INTAKE PIPE SHORT BOLT COLLAR	1	
9	JF168-K-09	AIR CLEANER ELBOW COMP.	1	
10	JF168-K-10	AIR CLEANER COVER WINGNUT	1	
11	JF168-K-11	TOOL BOX SETTING WINGNUT	1	
12	JF168-K-12	BOLT-WASHER (M6X 20)	1	
13	JF168-K-13	FLANGE NUT (M6)	2	
14	JF168-K-14	AIR CLEANER ASSY.	1	



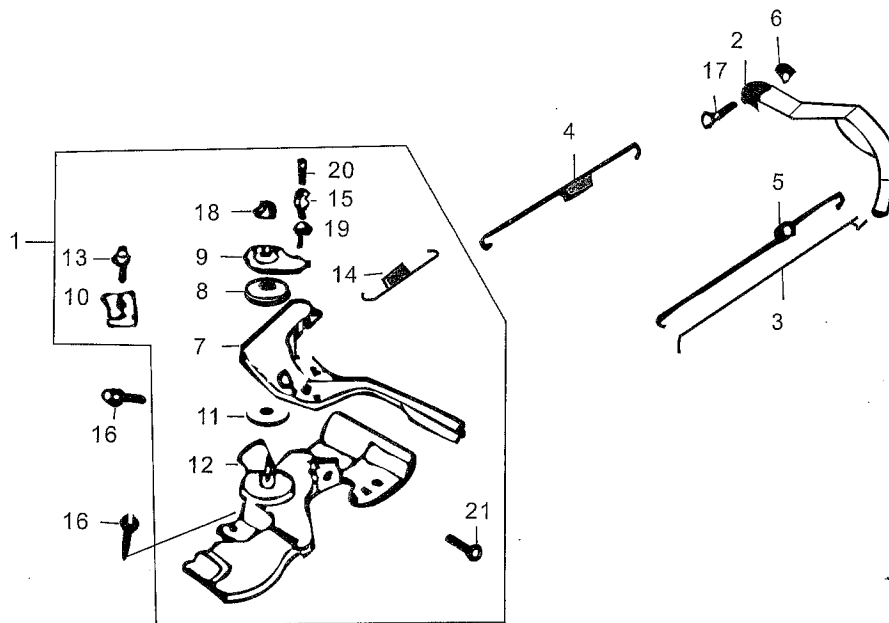
MUFFLER SYSTEM ASSY				
REF NO.	PART NO.	DESCRIPTION	REGD NO.	
1	JF168-M-01	MUFFLER COMP	1	
2	JF168-M-02	MUFFLER OUTER PROTECTOR	1	
3	JF168-M-03	SPARK ARRESTER	1	
4	JF168-M-04	MUFFLER GASKET	1	
5	JF168-M-05	TAPPING SCREW (M5X8)	4	
6	JF168-M-06	MUFFLER ASSY	1	



FUEL TANK SYSTEM ASSY			
REF NO.	PART NO.	DESCRIPTION	REGD NO.
1	JF168-N-01	FUEL TANK COMP.	1
2	JF168-N-02	FUEL FILLER CAP COMP.	1
3	JF168-N-03	FLANGE NUT (M6)	2
4	JF168-N-04	TUBE CLIP	2
5	JF168-N-05	FUEL TUBE	1
6	9.300.006	FLAT WASHER $\phi 6$	1
7	9.106.025	FLANGE BOLT (M6X 25)	1
8	JF168-N-08	FUEL TANK JOINT	1
9	JF168-N-09	O-RING (14mm)	1
10	JF168-N-10	FUEL FILTER	1
11	9.400.006	LOCK WASHER $\phi 6$	1

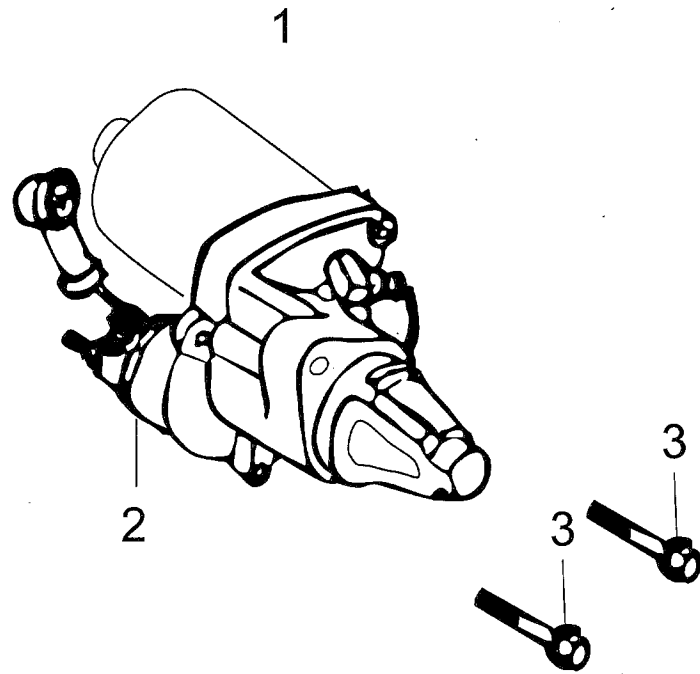


FLYWHEEL SYSTEM ASSY				
REF NO.	PART NO.	DESCRIPTION	REGD NO.	
1	JF168-O-01A	FLYWHEEL COMP.	1	
2	JF168-O-02	COOLING FAN	1	
3	JF168-O-03	STARTER PULLEY	1	
4	JF168-O-04	FLYWHEEL NUT	1	

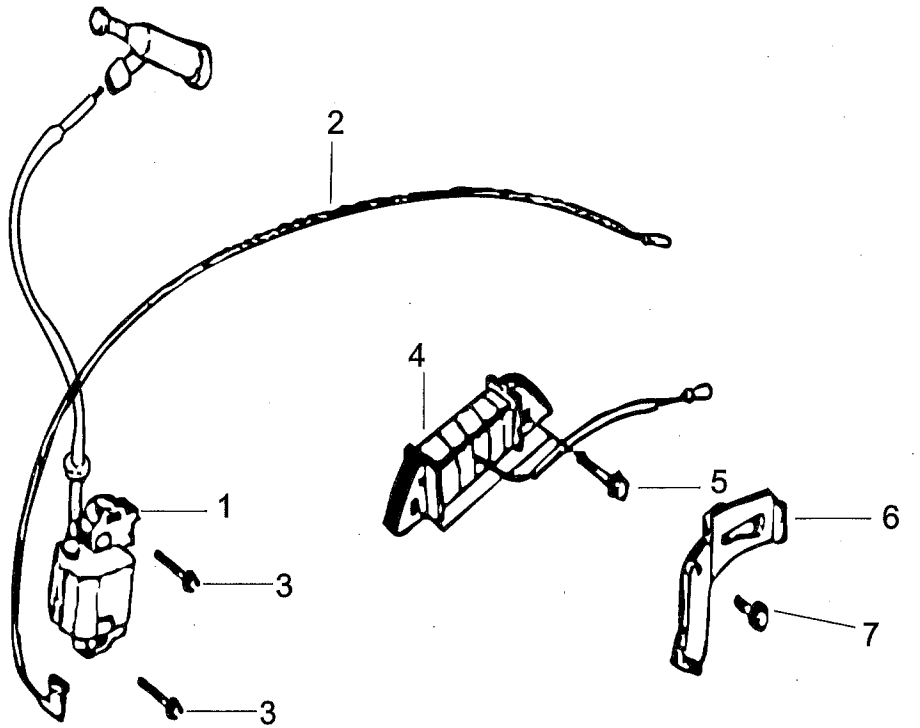


STEERING SHAFT ASSY.

REF NO .	PART NO .	DESCRIPTION	REGD NO .
1	JF168-P-01	CONTROL ASSY.	1
2	JF168-P-02	CONTROL ARM	1
3	JF168-P-03	GOVERNOR ROD	1
4	JF168-P-04	GOVERNOR SPRING	1
5	JF168-P-05	THROTTLE RETURN SPRING	1
6	JF168-P-23	FLANGE NUT (M6)	1
7	JF168-P-07	CONTROL LEVER	1
8	JF168-P-08	DISH SPRING	1
9	JF168-P-09	CONTROL LEVER WASHER	1
10	JF168-P-10	CABLE HOLDER	1
11	JF168-P-11	CONTROL LEVER SPACER	1
12	JF168-P-12	CONTROL BASE COMP. RING	1
13	JF168-P-13	PAN SCREW (M5 X 16)	1
14	JF168-P-14	CABLE RETURN SPRING	1
15	JF168-P-15	WIRE HOLDER	1
16	JF168-P-16	FLANGE BOLT (M6 X12)	2
17	JF168-P-17	QUADRATE BOLT (M6)	1
18	JF168-P-18	SELF-LOCK NUT (M6)	1
19	JF168-P-19	CIRCLIP (5mm)	1
20	JF168-P-20	PAN SCREW (M4X6)	1
21	JF168-P-21	PAN SCREW (M5X25)	1



STARTER MOTOR SYSTEM ASSY.				
REF NO.	PART NO.	DESCRIPTION	REGD NO.	
1	JF168-R1	UNIT STARTER MOTOR	1	
2	JF168-R2	COMTACTOR ASSY.	1	
3	JF168-R3	FLANGE BOLT (M8X35)	2	

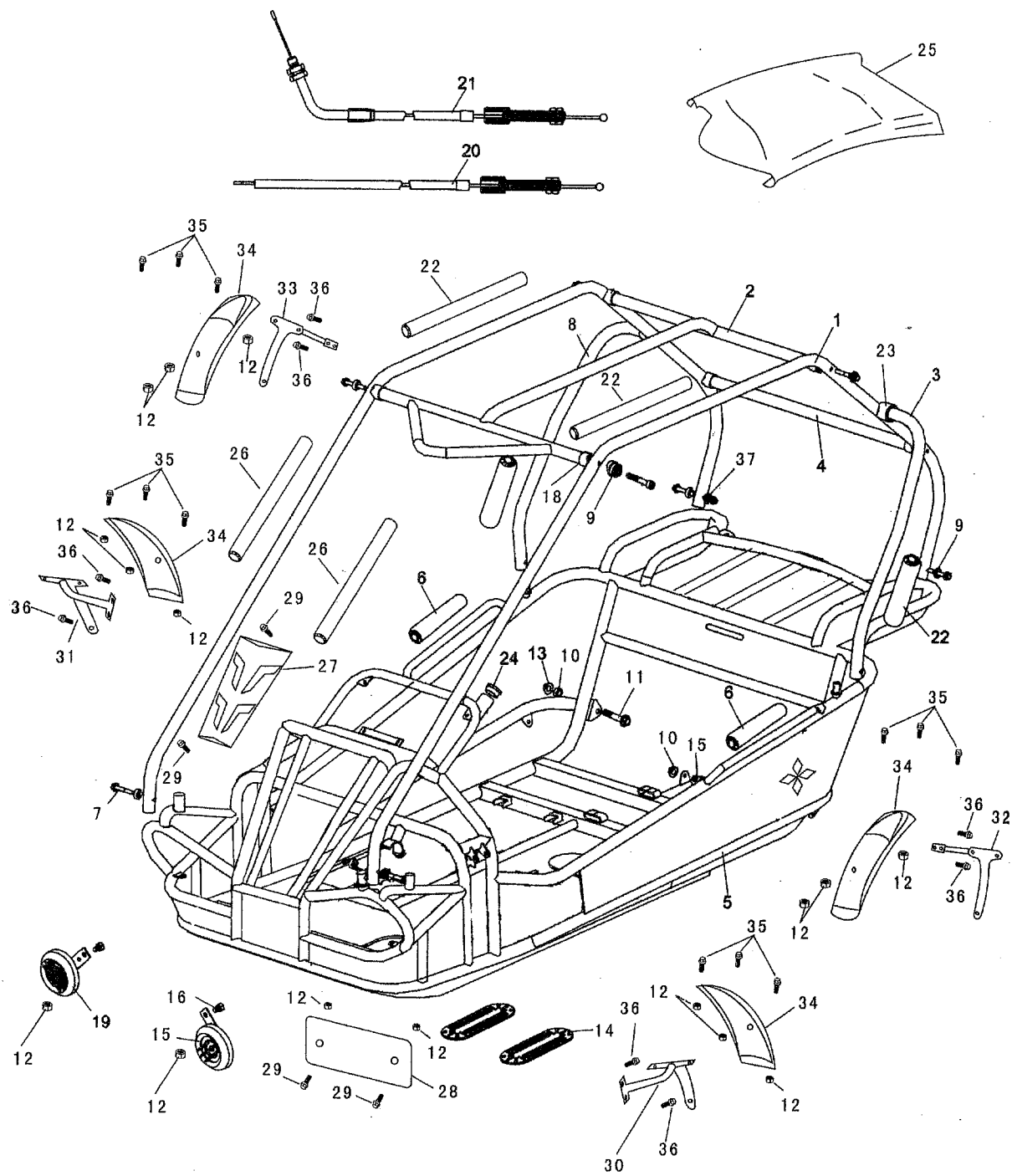


IGNITION SYSTEM ASSY.

REF NO .	PART NO .	DESCRIPTION	REGD NO .
1	JF168-0-05	IGNITION COIL ASSY.	1
2	JF168-S-2	STOP SWITCH WIRE	1
3	JF168-0-06	FLANGE BOLT (M6X25)	2
4	Jf168-S-4	CHARGE COIL ASSY.	1
5	Jf168-S-5	FLANGE BOLT (M6X40)	2
6	Jf168-S-6	CORD CLAMPER	1
7	JF168-S-7	FLANGE BOLT (M6X20)	1

FIG.17

FRAME GROUP

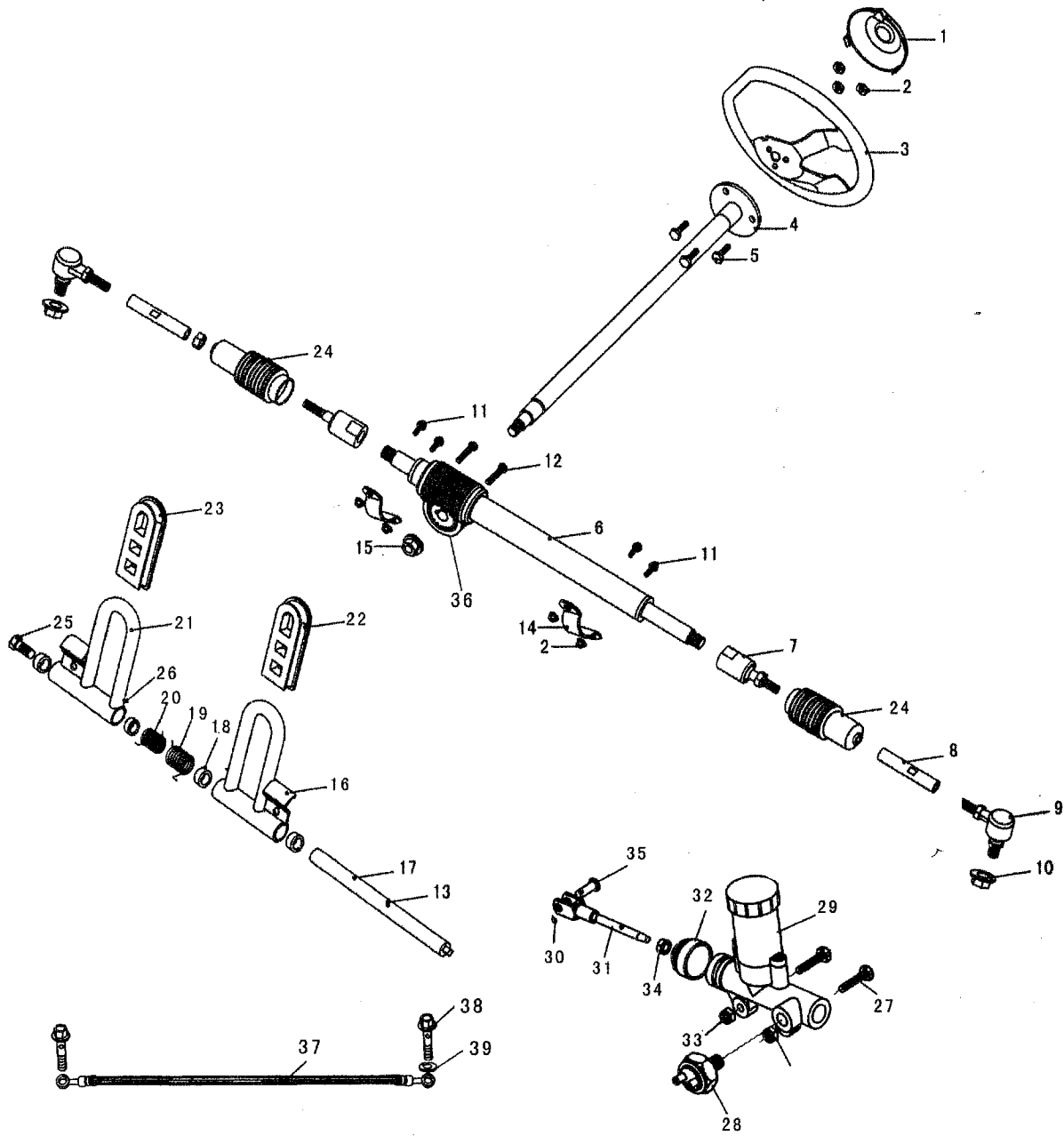


PARTS MANUAL

FRAME GROUP				
REF NO .	PART NO .	DESCRIPTION	REGD NO .	
1	8.070.054	C.B.C.BARCAGE.(R.S.B)	2	
2	6.060.300	C.B.C.CUSTOM CROSS BARTOP.FR(R.S.B)	1	
3	8.070.055	C.B.C.CUSTOM J-BAR.LSIDE(R.S.B)	1	
4	8.080.078	C.B.C.CUSTOM CROSS BARTOP.RR(R.S.B)	1	
5	2.000.054	FRAME COMP.(R.S.B)	1	
6	6.000.189	FOAM RADDING-1	2	
7	9.129.850	ALLEN HEAD BOLT M8x1.25x50	14	
8	8.070.056	C.B.C.CUSTOM J-BAR.RSIDE(R.S.B)	1	
9	7.0101.049	BAR CAGE WASHER,CAP	20	
10	9.200.010	NUTM10	5	
11	9.110.068	FLANGE BOLTM10x1.25x68	2	
12	9.210.008	NUT M6	16	
13	9.220.010	LOCKING FLANGE NUT,M10	2	
14	7.020.045	RUBBER FOOLPLAIE	4	
15	9.110.016	FLANGE BOLT M10x1.25x16	3	
16	9.106.012	FLANGE BOLT M6x12	2	
17	6.000.175	HORN.L	1	
18	7.010..017	TUBE SEAT ϕ 25	6	
19	6.000.174	HORN.H	1	
20	6.000.317	THROTTLE CABLE COMP.	1	
21	6.130.134	CHOKE CABLE COMP	1	
22	6.000.319	FOAM RADDING-2	2	
23	7.110.018	TUBE SEAT ϕ 28	2	
24	7.010.006	STEERINGSHAFT BUSH	1	
25	6.000.320	BIKINI TOP	1	
26	7.020.111	FOAM PADDING-3	2	
27	9.131.192	DECORATION PLATE I	1	
28	8.147.162	DECORATION PLATE II	1	
29	5.120.074	BOLT M6*20	4	
30	6.131.172	FRONT FENDER BRACKET,L	1	
31	6.130.172	FRONT FENDER BRACKET,R	1	
32	6.132.172	REAR FENDER BRACKET.L	1	
33	6.133.172	REAR FENDER BRACKET,R	1	
34	6.001.074	FENDER	4	
35	9.906.016	BOLT-WASHER M6*16	12	
36	9.106.102	BOLT-WASHER M6*12	8	
37	9.220.008	NUT M8	6	

FIG.18

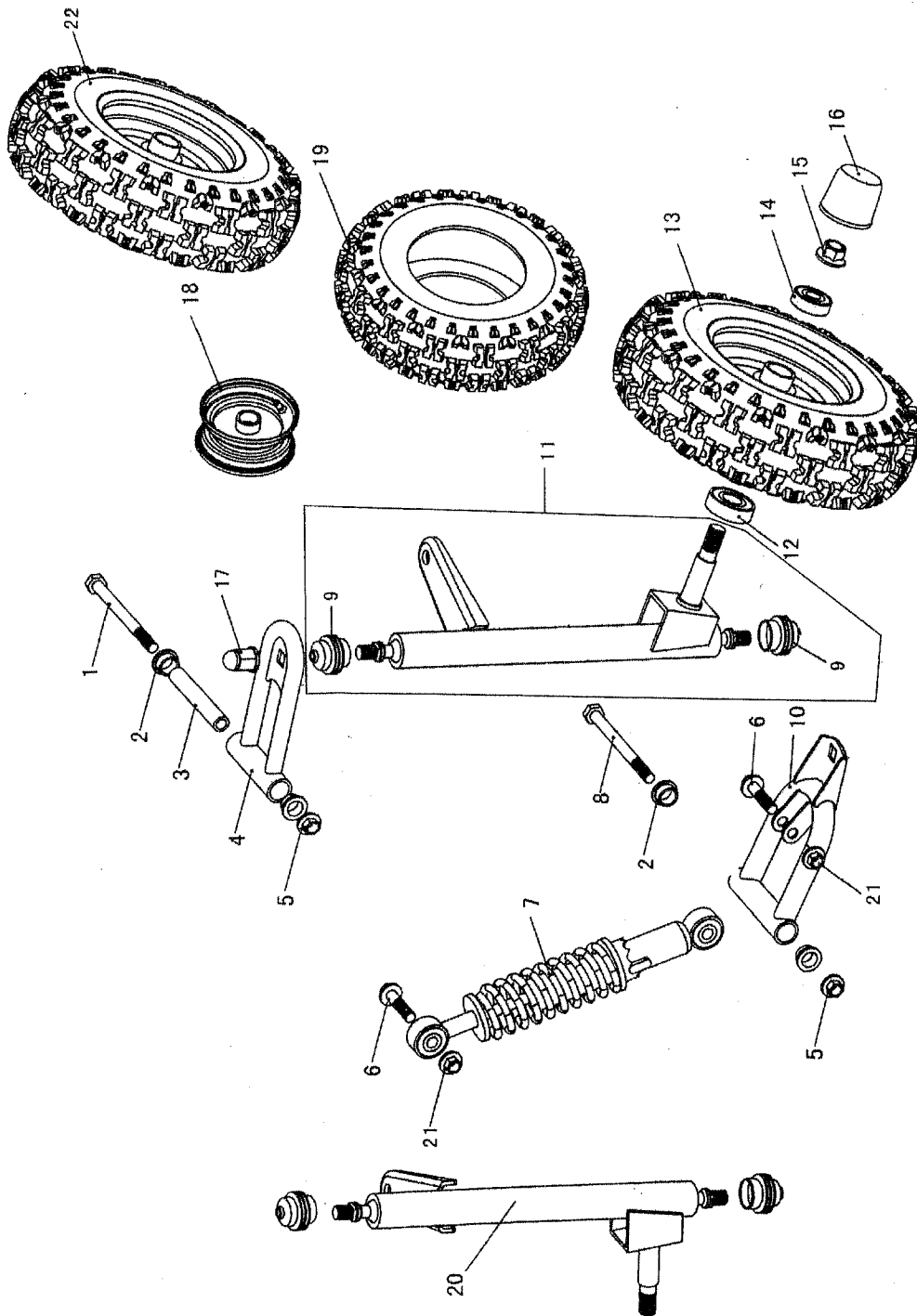
STEERING SHAFT ASSY.



STEERING SHAFT ASSY.				
REF NO .	PART NO .	DESCRIPTION	REGD NO .	
1	7.010.056	STEERING BOLT COVER	1	
2	9.210.006	LOCKING NYLON NUT M6	7	
3	7.020.057	STEERING WHEEL	1	
4	2.000.056	STEERING-SHAFT	1	
5	9.100.616	BOLT M6 x16	3	
6	4.100.024	STEERING GEAR	1	
7	6.000.180	STEERING BALL JOINT	2	
8	8.010.135	TIE ROD	2	
9	6.000.181	ROD END	2	
10	9.210.008	LOCKING NYLON NUT M8	2	
11	9.106.020	FLANGE BOLT,M6 x20	4	
12	9.100.512	BOLT,M5 x12	2	
13	9.500.008	ROLL PIN ϕ 3 x 20	1	
14	8.020.130	STEERING GEAR BRACKET(R.S.B)	2	
15	9.220.012	LOCKING FLANGE NUT M12	1	
16	4.000.044	BRAKE PEDAL COMP.	1	
17	8.010.123	PEDAL BOLT	1	
18	7.010.003	PEDAL BUSH	4	
19	8.040.011	BRAKE PEDAL RETURN SPRING,R	1	
20	8.040.010	THROTTLE PEDAL RETURN SPRING,L	1	
21	9.500.218	THROTTLE PEDAL COMP	1	
22	7.020.043	RED BRAKE PEDAL PAD	1	
23	7.020.044	GREEN THROTTLE PEDAL PAD	1	
24	7.020.059	STEERING BALL JOINT DUST COVER	2	
25	9.129.814	ALLEN HEAD BOLT M8 x 1.25 x 14	1	
26	9.500.007	POLL PIN 3 x 16	2	
27	9.906.625	BOLT M6 x 25	2	
28	6.000.304	BRAKE LAMP SWITCH ASSY.	1	
29	6.000.305	MASTER CYLINDER	1	
30	9.500.218	COTTER PIN	1	
31	6.000.306	CYLINDER ROD	1	
32	7.020.076	DUST COVER	1	
33	9.210.006	LOCKING NYLON NUT M8	2	
34	9.200.006	HEX NUT M6	1	
35	6.000.308	LOCKING ROLL PIN	1	
36	4.010.001	STEERING GEAR	1	
37	6.000.010	BRAKE HOSE ASSY	1	
38	9.700.004	BANJO BOLT M10 X 24	2	
39	9.300.010	WASHER ϕ 10	4	

FIG. 19

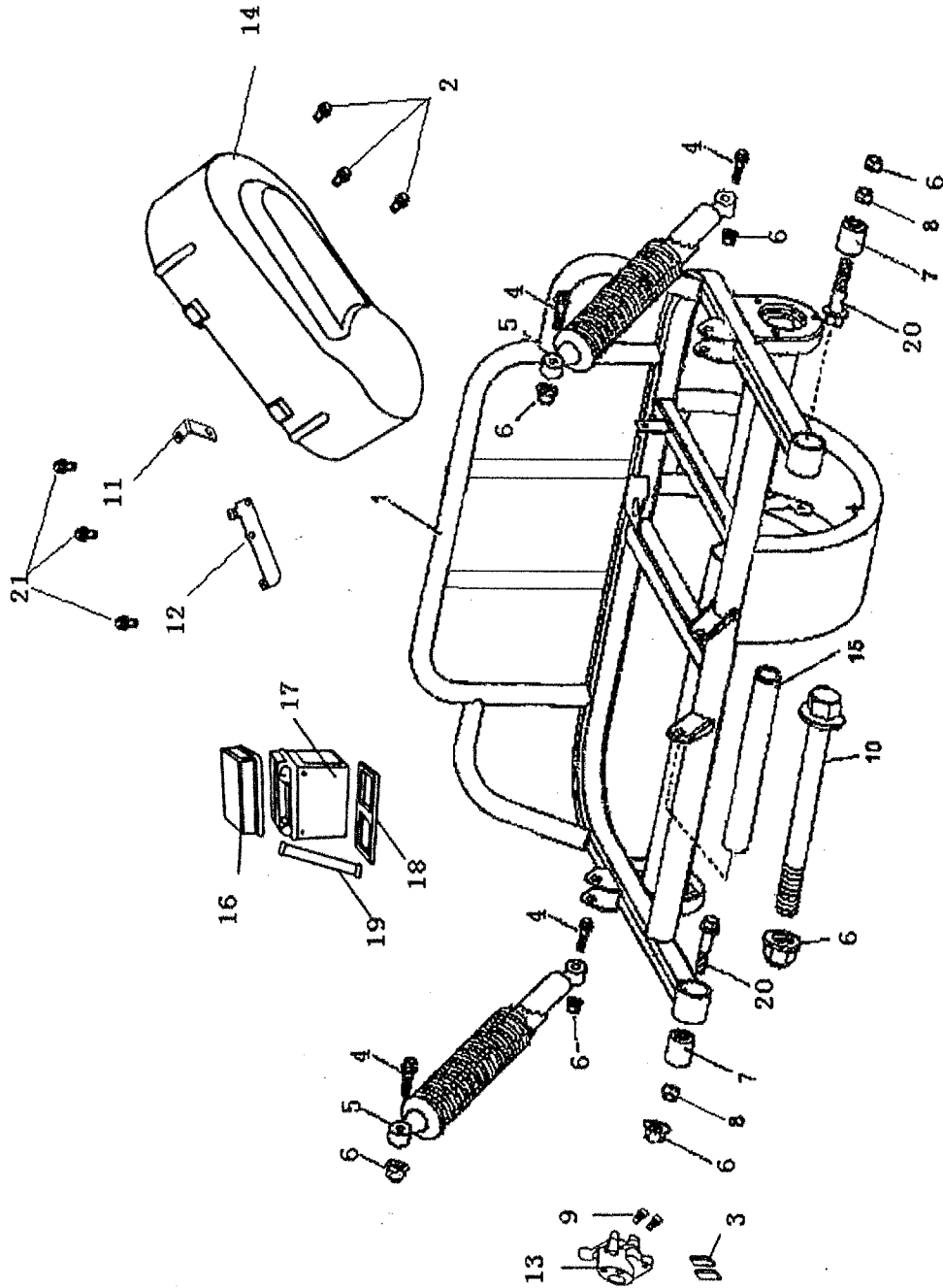
SUSPENSION ARM ASSY.



SUSPENSION ARM ASSY.				
REF NO .	PART NO .	DESCRIPTION	REGD NO .	
1	9.108.105	FLANGE BOLOT M8 x 1.25 x 105	2	
2	7.010.003	UPPER SUSPENSION ARM BUSH	8	
3	8.010.015	UPPER SUSPENSION ARM COLLAR	2	
4	4.000.047	UPPER SUSPENSION ARM	2	
5	9.220.008	LOCKING FLANGE UNT.M8	4	
6	9.110.040	FLANGE BOLT M10 x 40	4	
7	6.100.325	CUSHION ASS' Y.FR	2	
8	9.708.145	FLANGE BOLT M8x1.25x145	2	
9	7.020.061	BALL HEAD DUST SEAL	4	
10	4.000.041	LOWER SUSPENSION ARM ASS' Y	2	
11	2.000.055-80	SPINDLE AND STRUT SUPPORT,R	1	
12	9.030.010	BEARING 6202	2	
13	6.100.309	FRONT WHEEL ASS' Y.L.	1	
14	9.030.009	BEARING 6201	2	
15	9.220.012	LOCKING FLANGE NUT M12	2	
16	7.020.039	HUB COVER FR	2	
17	8.010.141	ACORN NUT M10	2	
18	6.100.310	RIM,FR	2	
19	6.100.311	TIRE,FR 4.1-6	2	
20	2.0000.057	SPINDLE AND STRUT SUPPORT,L	1	
21	9.220.010	LOCKING FLANGE M10	4	
22	6.100.321	FRONT WHEEL ASSY.R.	1	

FIG.20

REAR SWING ARM

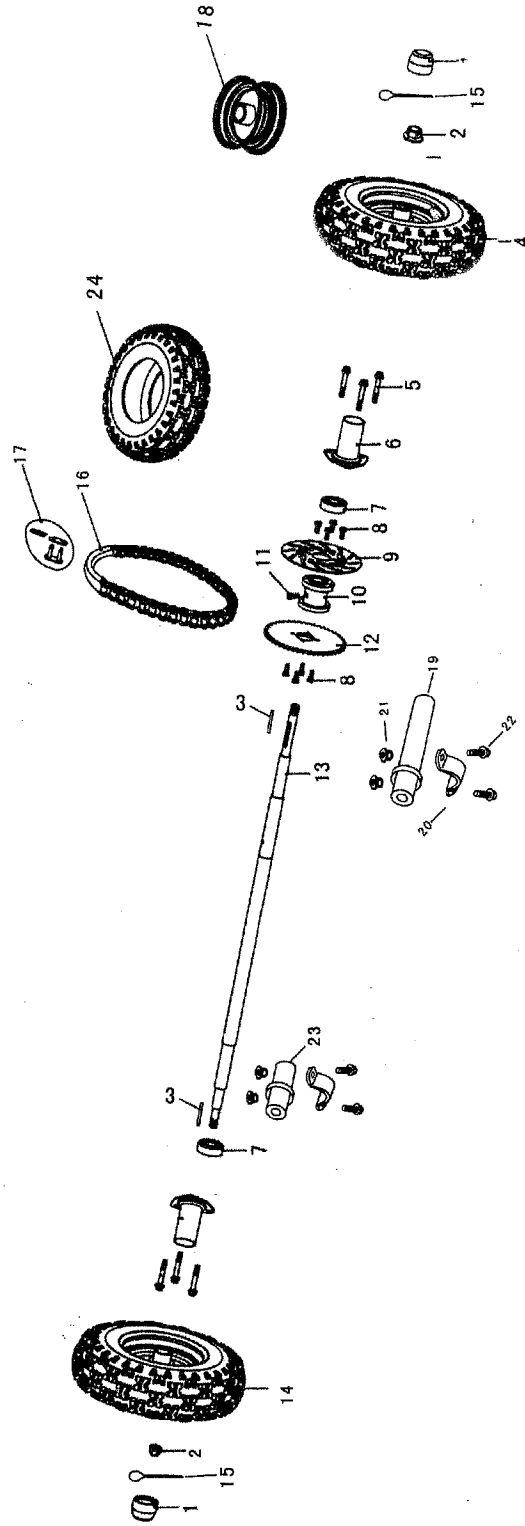


REAR SWING ARM

REAR SWING ARM				
REF NO .	PART NO .	DESCRIPTION	REGD NO .	
1	4.000.045	REAR SWING ARM	1	
2	9.106.012	FLANGE LOCKING NUT M6X12	3	
3	7.020.016	RR. BRAKE PAD SET	1	
4	9.110.040	FLANGE LOCKING BOLT M10X1.25X40	4	
5	6.000.322	CUSHION ASSY. RR.	2	
6	9.220.010	LOCKING NUT M10X1.25	7	
7	7.020.077	BUSHING, SWING ARM ISOLATOR	2	
8	9.210.008	NUT M10X1.25	2	
9	9.908.012	BOLT M8X12	2	
10	9.110.180	BOLT M10X1.25X180.	1	
11	7.100.001	FIXER PLASTIC I	1	
12	7.100.002	FIXER PLASTIC II	1	
13	6.000.028	RR. CALIPER ASSY.	1	
14	8.110.021	DRIVE COVER PLASTIC	1	
15	8.146.066	SPANNER	1	
16	7.010.028	BATTERY COVER	1	
17	6.000.323	BATTERY 12V 6.5AH	1	
18	7.020.023	LOWER BATTERY CUSHION	1	
19	7.020.023	BATTERY STRAP	1	
20	9.110.055	FLANGE LOCKING M10X1.25X65	2	
21	9.108.016	FLANGE LOCKING M8X16	3	

FIG. 21

REAR HOUSING

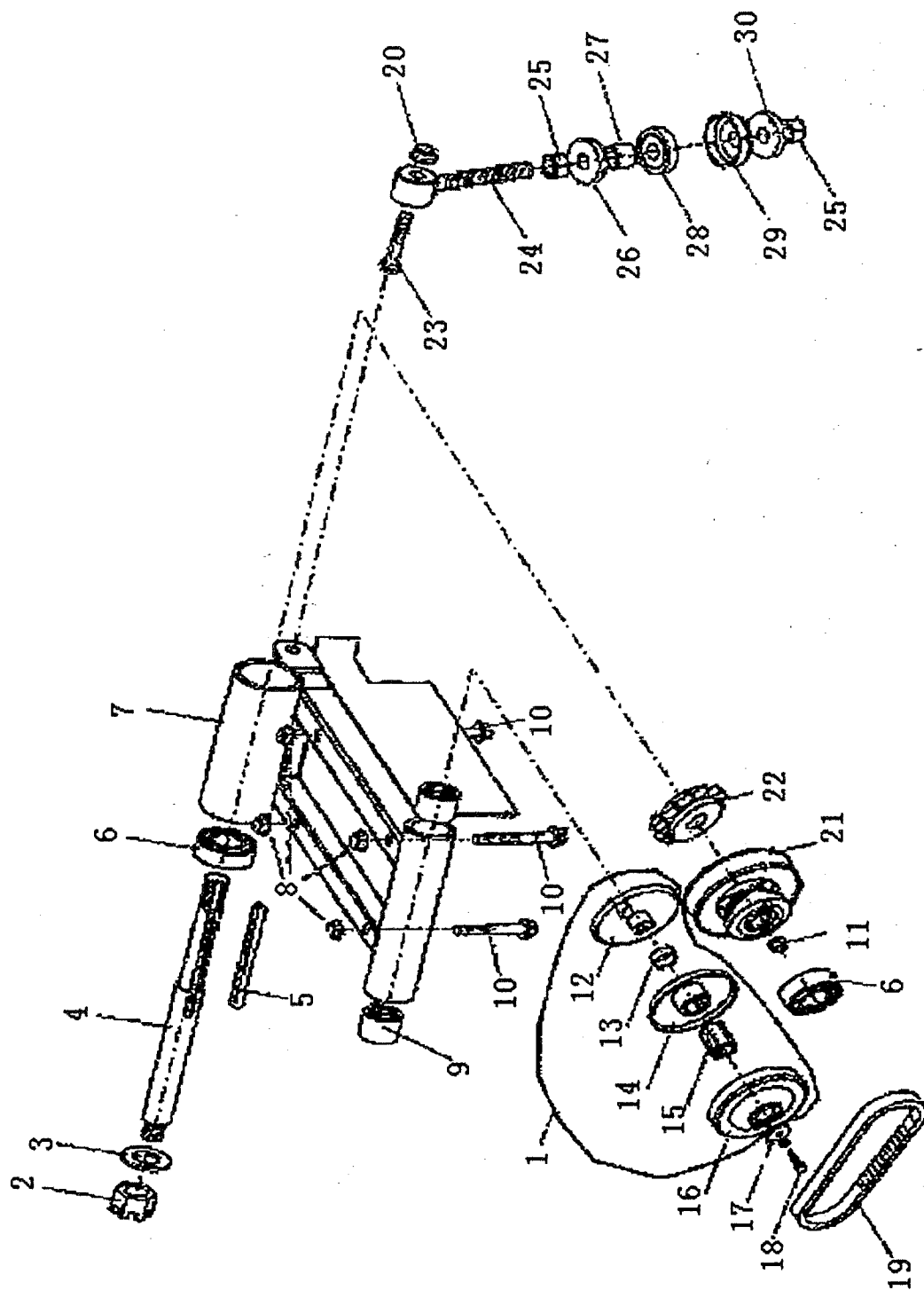


REAR HOUSING

REAR HOUSING				
REF NO .	PART NO .	DESCRIPTION	REGD NO .	
1	7.020.039	HUB COVER,RR	2	
2	9.800.016	CASTLE NUT M16	1	
3	8.010.138	AXLE KEY	2	
4	6.100.315	REAR WHEEL ASSY R.	1	
5	9.108.016	FLANGE BOLT M8 x1.25x16	6	
6	6.000.195	AXLE COVER,R	1	
7	9.030.002	BEARING,6204	2	
8	9.108.020	FLANGE BOLT M8x20	8	
9	8.010.201	DISC BRAKE,RR	1	
10	8.010.202	REAR AXLE HUB	1	
11	9.110.010	ALLEN HEAD BOLOT M10x1.25x10	1	
12	8.010.200	REAR SPROCKET	1	
13	8.010.199	REAR AXLE	1	
14	6.100.316	REAR WHEEL ASS' Y.L	1	
15	9.500.440	COTTER PIN φ3.5x40	2	
16	7.060.016	DRIVE CHAIN	1	
17	6.000.324	MASTER LINK	1	
18	6.100.333	RIM,RR L	1	
19	9.010.012	PROTECTOR II	1	
20	8.020.014	BRACKET,STEERING GEAR	2	
21	9.220.008	LOCKING FLANGE NUT.M8	4	
22	9.106.020	BOLT-WASHER M6x20	4	
23	9.010.011	PROTECTOR I	1	
24	7.020.078	REAR TIRE 16x7.8	2	

FIG.22

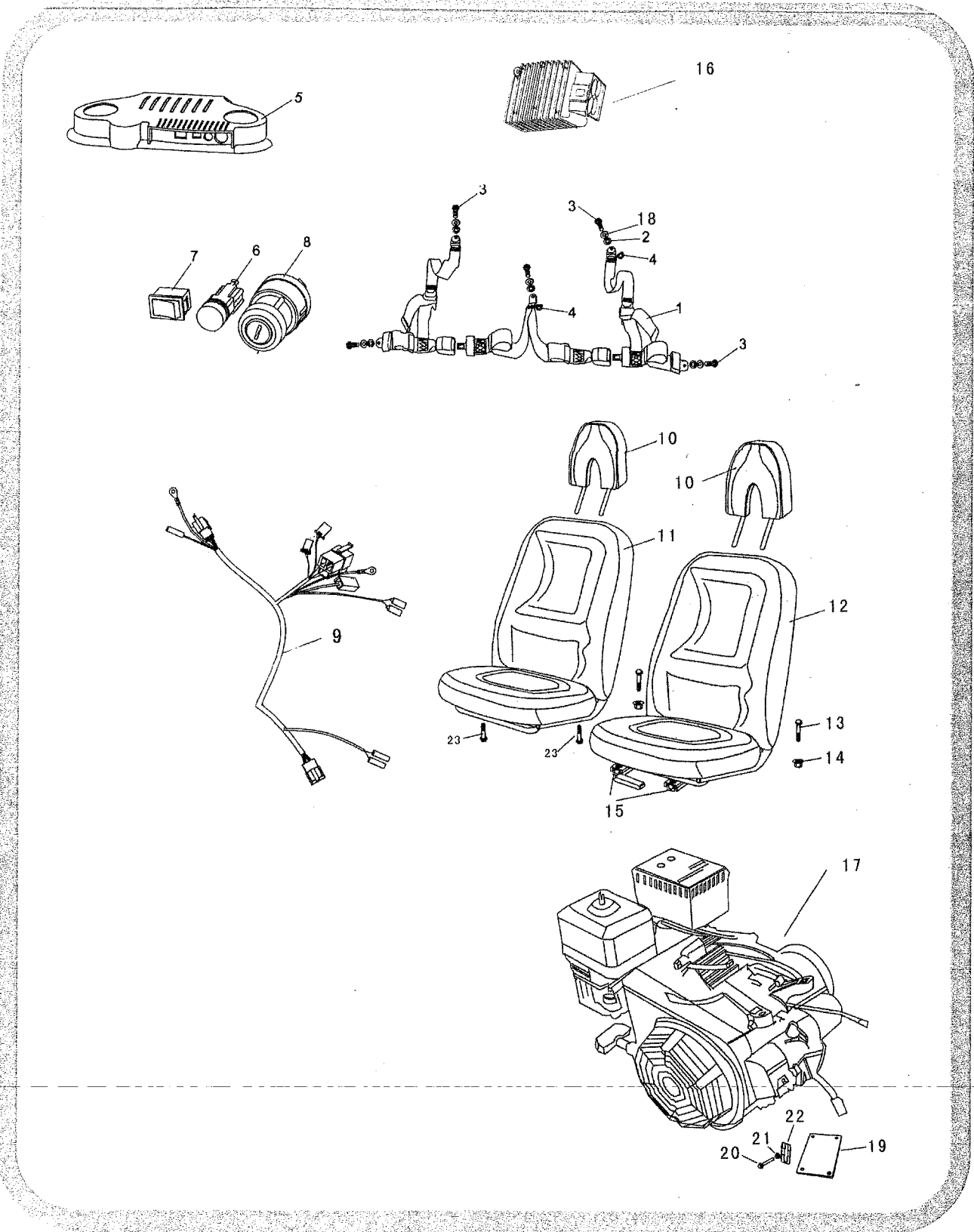
CLUTCH ASSY



CLUTCH ASSY				
REF NO .	PART NO .	DESCRIPTION	REGD NO .	
1	9.500.001	REAR CLUTCH 80T	1	
2	9.220.012	CASTLE NUT M14X1.5	1	
3	9.300.012	WASHER ϕ 14	1	
4	8.011.057	SHAFT, SPROCKET & DRIVE PULLEY	1	
5	8.010.027	KEY 5X75	1	
6	6.000.065	BEARING	2	
7	8.000.001	ENGINE MOUNTING PLATE-METALLIC BLUE	1	
8	9.220.008	FLANGE LOCKING NUT M8	4	
9	7.020.077	BUSHING	2	
10	9.108.050	BOLT M8X55	4	
11	9.220.016	LOCKING NUT M16X1.5	1	
12	8.146.098	SHEAVE, STATIONARY	1	
13	8.146.099	BUSHING	1	
14	8.147.000	SHEAVE, MOVEABLE	1	
15	8.147.001	HUB	1	
16	8.147.002	DRUM	1	
17	9.300.008	WASHER, ϕ 8	1	
18	9.208.045	BOLT, M8X45L	1	
19	9.100.018	BELT	1	
20	9.220.016	FLANGE LOCKING NUT M10X1.25	1	
21	9.500.010	DRIVEN PULLEY	1	
22	8.011.077	SPROCKET, 10T DRIVEN	1	
23	9.108.045	BOLT M10X1.25X40	1	
24	8.147.008	CHAIN ADJUSTER	1	
25	9.220.012	NUT M12X1.25	2	
26	8.010.042	WASHER-CHAIN ADJUSTER	1	
27	8.010.041	BUSHING-CHAIN ADJUSTER	1	
28	7.020.001	CAP WASHER-CHAIN ADJUSTER	1	
29	8.020.045	BOTTOM CAP WASHER-CHAIN ADJUSTER	1	
30	9.300.012	WASHER, FLAT ϕ 12	1	

FIG.23

WIRE HARNESS/ELECTRICAL/SEAT/ENGINE



WIRE HARNESS/ELECTRICAL/SEAT/ENGINE				
REF NO .	PART NO .	DESCRIPTION	REGD NO .	
1	6.000.328	SAFETY BELT	1	
2	9.700.002	BELT WASHER 12	5	
3	9.700.001	SPECIAL BOLT M7/16 "X28	5	
4	9.700.003	BELT NUT M7/16 "	5	
5	7.010.076	SWITCH PANET COVER	1	
6	6.000.164	ENGINE STOP BUTTON	1	
7	6.000.133	HORN BUTTON	1	
8	6.000.165	POWER ON SWITCH	1	
9	6.000.313	WIRE HARNESS	1	
10	6.000.329	HEAD-REST	2	
11	6.000.330	SEAT COMP.R	1	
12	6.000.331	SEAT COMP.L	1	
13	9.900.840	BOLT STRAP M8X1.25X45	2	
14	9.220.008	LOCKING FLANGE NUT M8	2	
15	6.000.057	SEAT RALL SET	1	
16	6.100.167	RECTIFIER COMP.REGULATE	1	
17	7.160.012	ENGINE COMP.	1	
18	7.060.022	LOCKING WASHER	5	
19	6.020.031	GASKET	1	
20	9.108.050	BOLT M8x50	4	
21	9.220.008	NUT M8	4	
22	6.012.088	ADTWSHER.CHAIN	4	
23	9.900.840	BOLT STRAP M8X1.25X40	2	